

# Splicing factor 1 antibody [N1N3]

**Cat. No. GTX104540**

<b>Host</b>	Rabbit
<b>Clonality</b>	Polyclonal
<b>Isotype</b>	IgG
<b>Application</b>	WB, ICC/IF, IP
<b>Reactivity</b>	Human

[Reference \( 1 \)](#)

**Package**

100 µl, 25 µl

## APPLICATION

### Application Note

\*Optimal dilutions/concentrations should be determined by the researcher.

Suggested dilution	Recommended dilution
WB	1:500-1:3000
ICC/IF	1:100-1:1000
IP	Assay dependent

Not tested in other applications.

**Calculated MW** 68 kDa. ( [Note](#) )

**Product Note** Knockdown/Knockout validation was supported by references (PMID:26990993)

## PROPERTIES

<b>Form</b>	Liquid
<b>Buffer</b>	0.1M Tris, 0.1M Glycine, 10% Glycerol
<b>Preservative</b>	0.01% Thimerosal
<b>Storage</b>	Store as concentrated solution. Centrifuge briefly prior to opening vial. For short-term storage (1-2 weeks), store at 4°C. For long-term storage, aliquot and store at -20°C or below. Avoid multiple freeze-thaw cycles.
<b>Concentration</b>	0.77 mg/ml (Please refer to the vial label for the specific concentration.)
<b>Immunogen</b>	Recombinant protein encompassing a sequence within the center region of human splicing factor 1. The exact sequence is proprietary.
<b>Purification</b>	Purified by antigen-affinity chromatography.
<b>Conjugation</b>	Unconjugated



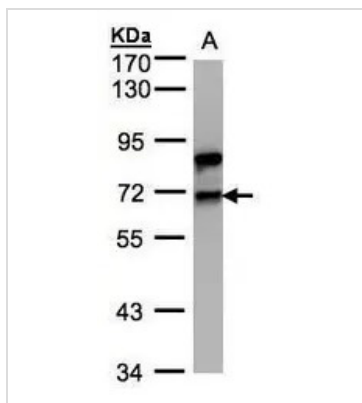
For full product information, images and publications, please visit our [website](#).

For laboratory research use only. Not for any clinical, therapeutic, or diagnostic use in humans or animals. Not for animal or human consumption.

## Note

Purchasers shall not, and agree not to enable third parties to, analyze, copy, reverse engineer or otherwise attempt to determine the structure or sequence of the product.

## DATA IMAGES



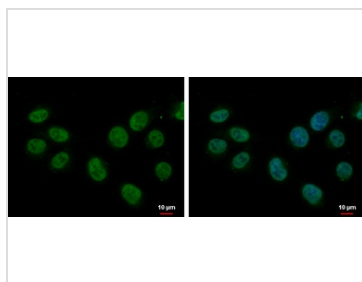
### GTx104540 WB Image

Sample(30 ug whole cell lysate)

A:Raji (GTx27908)

7.5% SDS PAGE

GTx104540 diluted at 1:1000



### GTx104540 ICC/IF Image

splicing factor 1 antibody [N1N3] detects splicing factor 1 protein at nucleus by immunofluorescent analysis.

Sample: A375 cells were fixed in 4% paraformaldehyde at RT for 15 min.

Green: splicing factor 1 protein stained by splicing factor 1 antibody [N1N3] (GTx104540) diluted at 1:500.

Blue: Hoechst 33342 staining.



For full product information, images and publications, please visit our [website](#).