

Glypican 1 antibody [N3C3]

Cat. No. GTX104557

Host	Rabbit
Clonality	Polyclonal
Isotype	IgG
Applications	WB, ICC/IF, IHC-P, FCM, IP, ELISA
Reactivity	Human, Mouse, Rat

References (11)

★★★★★ Review (1)

Package

100 µl, 25 µl

Applications

Application Note

*Optimal dilutions/concentrations should be determined by the researcher.

Suggested dilution	Recommended dilution
WB	1:500-1:3000
ICC/IF	1:100-1:1000
IHC-P	1:100-1:1000
FCM	1:50-1:200
IP	1:100-1:500
ELISA	1:1000-1:10000

Not tested in other applications.

Calculated MW 62 kDa. ([Note](#))

Product Note KO/KD validation is based on published data (PMID: 28102194).

Properties

Form	Liquid
Buffer	PBS, 20% Glycerol
Preservative	0.025% ProClin 300
Storage	Store as concentrated solution. Centrifuge briefly prior to opening vial. For short-term storage (1-2 weeks), store at 4°C. For long-term storage, aliquot and store at -20°C or below. Avoid multiple freeze-thaw cycles.
Concentration	0.92 mg/ml (Please refer to the vial label for the specific concentration.)
Immunogen	Recombinant protein encompassing a sequence within the center region of human Glypican 1. The exact sequence is proprietary.
Purification	Purified by antigen-affinity chromatography.

For full product information, images and publications, please visit our [website](#).

Date 2025 / 07 / 31 Page 1 of 2

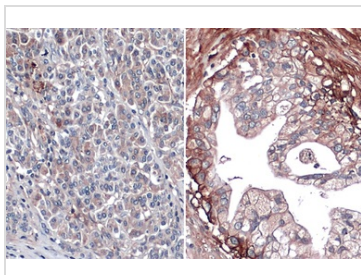
Conjugation

Unconjugated

For laboratory research use only. Not for any clinical, therapeutic, or diagnostic use in humans or animals. Not for animal or human consumption.

Note

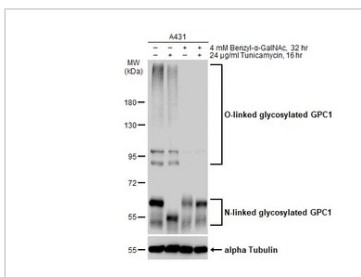
Purchasers shall not, and agree not to enable third parties to, analyze, copy, reverse engineer or otherwise attempt to determine the structure or sequence of the product.

DATA IMAGES

GTx104557 IHC-P Image

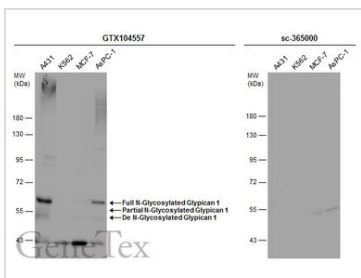
Glypican 1 antibody [N3C3] detects Glypican 1 protein at cell membrane by immunohistochemical analysis. Sample: Paraffin-embedded human normal pancreas (left) and pancreatic cancer (right).

Glypican 1 stained by Glypican 1 antibody [N3C3] (GTx104557) diluted at 1:500.

Antigen Retrieval: Citrate buffer, pH 6.0, 15 min


GTx104557 WB Image

Untreated (-) and treated (+) A431 whole cell extracts (30 µg) were separated by 7.5% SDS-PAGE, and the membrane was blotted with Glypican 1 antibody [N3C3] (GTx104557) diluted at 1:3000. The HRP-conjugated anti-rabbit IgG antibody (GTx213110-01) was used to detect the primary antibody.


GTx104557 WB Image

Various whole cell extracts (30 µg) were separated by 7.5% SDS-PAGE, and the membranes were blotted with Glypican 1 antibody [N3C3] (GTx104557) diluted at 1:500 and competitor's antibody (sc-365000) diluted at 1:500. The HRP-conjugated anti-rabbit IgG antibody (GTx213110-01) was used to detect the primary antibody.

*The competitor is not affiliated with GeneTex and does not endorse this product.



For full product information, images and publications, please visit our [website](http://www.genetex.com).