

MMP2 antibody

Cat. No. GTX104577

Host	Rabbit
Clonality	Polyclonal
Isotype	IgG
Applications	WB, ICC/IF, IHC-P, IHC-Fr, IP
Reactivity	Human, Mouse, Rat, Pig

References (70)

★★★★★ Review (4)

Package

100 µl, 25 µl

Applications

Application Note

*Optimal dilutions/concentrations should be determined by the researcher.

Suggested dilution	Recommended dilution
WB	1:500-1:3000
ICC/IF	1:100-1:1000
IHC-P	1:100-1:1000
IHC-Fr	Assay dependent
IP	1:100-1:500

Not tested in other applications.

Calculated MW 74 kDa. ([Note](#))

Properties

Form	Liquid
Buffer	PBS, 1% BSA, 20% Glycerol
Preservative	0.025% ProClin 300
Storage	Store as concentrated solution. Centrifuge briefly prior to opening vial. For short-term storage (1-2 weeks), store at 4°C. For long-term storage, aliquot and store at -20°C or below. Avoid multiple freeze-thaw cycles.
Concentration	0.27 mg/ml (Please refer to the vial label for the specific concentration.)
Immunogen	Recombinant protein encompassing a sequence within the center region of human MMP2. The exact sequence is proprietary.
Purification	Purified by antigen-affinity chromatography.
Conjugation	Unconjugated



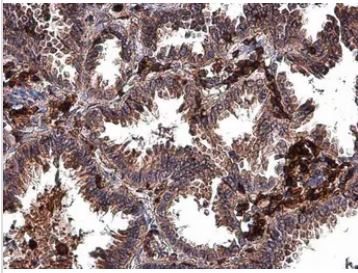
For full product information, images and publications, please visit our [website](#).

For laboratory research use only. Not for any clinical, therapeutic, or diagnostic use in humans or animals. Not for animal or human consumption.

Note

Purchasers shall not, and agree not to enable third parties to, analyze, copy, reverse engineer or otherwise attempt to determine the structure or sequence of the product.

DATA IMAGES



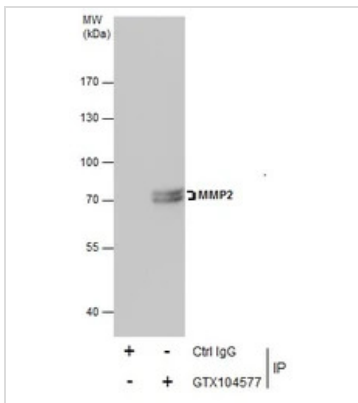
GTX104577 IHC-P Image

MMP2 antibody detects MMP2 protein at extracellular matrix in human lung cancer by immunohistochemical analysis.

Sample: Paraffin-embedded human lung cancer.

MMP2 antibody (GTX104577) diluted at 1:500.

Antigen Retrieval: Citrate buffer, pH 6.0, 15 min

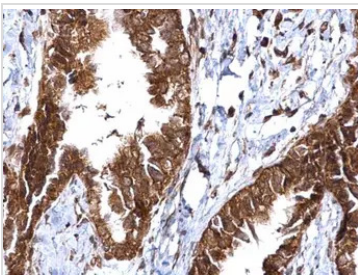


GTX104577 IP Image

Immunoprecipitation of MMP2 protein from U87-MG whole cell extracts using 5 µg of MMP2 antibody (GTX104577).

Western blot analysis was performed using MMP2 antibody (GTX104577).

EasyBlot anti-Rabbit IgG (GTX221666-01) was used as a secondary reagent.



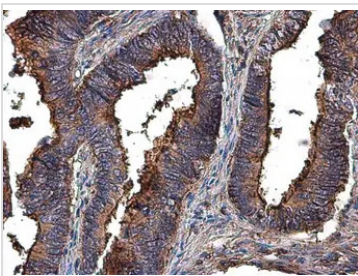
GTX104577 IHC-P Image

MMP2 antibody detects MMP2 protein at cytosol and nucleus on human ovarian carcinoma by immunohistochemical analysis.

Sample: Paraffin-embedded human ovarian carcinoma.

MMP2 antibody (GTX104577) dilution: 1:500.

Antigen Retrieval: Trilogy™ (EDTA based, pH 8.0) buffer, 15min



GTX104577 IHC-P Image

MMP2 antibody detects MMP2 protein at extracellular matrix in human colon cancer by immunohistochemical analysis.

Sample: Paraffin-embedded human colon cancer.

MMP2 antibody (GTX104577) diluted at 1:500.

Antigen Retrieval: Citrate buffer, pH 6.0, 15 min



For full product information, images and publications, please visit our [website](#).