

ERK2 antibody [N1], N-term

Cat. No. GTX104613

Host	Rabbit
Clonality	Polyclonal
Isotype	IgG
Application	WB, ICC/IF, IHC-P
Reactivity	Human, Cat, Dog

★★★★★ Review (1)

Package
100 µl, 25 µl

APPLICATION

Application Note

*Optimal dilutions/concentrations should be determined by the researcher.

Suggested dilution	Recommended dilution
WB	1:500-1:3000
ICC/IF	Assay dependent
IHC-P	1:100-1:1000

Not tested in other applications.

Calculated MW 41 kDa. ([Note](#))

PROPERTIES

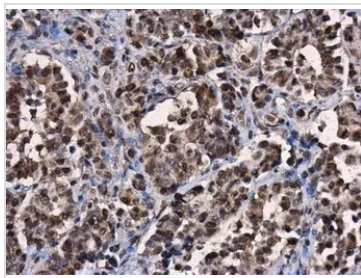
Form	Liquid
Buffer	PBS, 40% Glycerol
Preservative	0.01% Thimerosal
Storage	Store as concentrated solution. Centrifuge briefly prior to opening vial. For short-term storage (1-2 weeks), store at 4°C. For long-term storage, aliquot and store at -20°C or below. Avoid multiple freeze-thaw cycles.
Concentration	1 mg/ml (Please refer to the vial label for the specific concentration.)
Immunogen	Carrier-protein conjugated synthetic peptide encompassing a sequence within the N-terminus region of human ERK2. The exact sequence is proprietary.
Purification	Purified by antigen-affinity chromatography.
Conjugation	Unconjugated

Note For laboratory research use only. Not for any clinical, therapeutic, or diagnostic use in humans or animals. Not for animal or human consumption.

Purchasers shall not, and agree not to enable third parties to, analyze, copy, reverse engineer or otherwise attempt to determine the structure or sequence of the product.



For full product information, images and publications, please visit our [website](#).

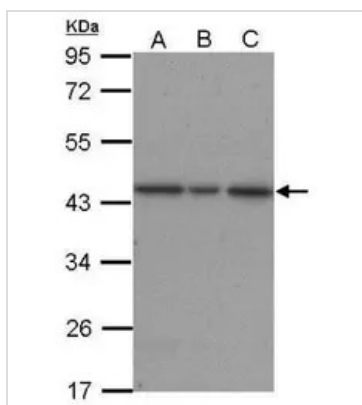
DATA IMAGES

GTx104613 IHC-P Image

ERK2 antibody [N1], N-term detects ERK2 protein at cytoplasm and nucleus in human oral carcinoma by immunohistochemical analysis.

Sample: Paraffin-embedded human oral carcinoma.

ERK2 antibody [N1], N-term (GTx104613) diluted at 1:500.

Antigen Retrieval: Citrate buffer, pH 6.0, 15 min


GTx104613 WB Image

Sample (30 ug of whole cell lysate)

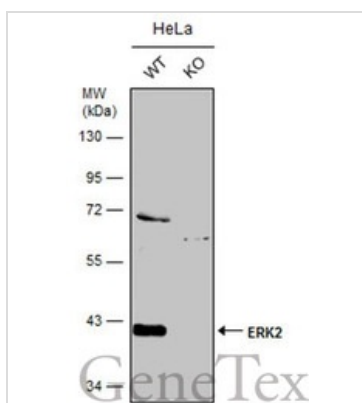
A: A431

B: H1299

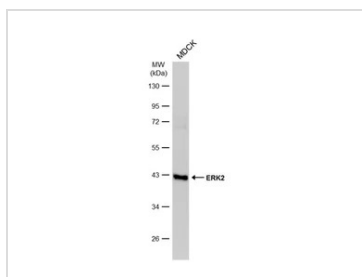
C: HepG2

12% SDS PAGE

GTx104613 diluted at 1:1500


GTx104613 WB Image

Wild-type (WT) and ERK2 knockout (KO) HeLa cell extracts (30 µg) were separated by 10% SDS-PAGE, and the membrane was blotted with ERK2 antibody [N1], N-term (GTx104613) diluted at 1:500. The HRP-conjugated anti-rabbit IgG antibody (GTx213110-01) was used to detect the primary antibody.


GTx104613 WB Image

Whole cell extract (30 µg) was separated by 10% SDS-PAGE, and the membrane was blotted with ERK2 antibody (GTx104613) diluted at 1:500. The HRP-conjugated anti-rabbit IgG antibody (GTx213110-01) was used to detect the primary antibody, and the signal was developed with Trident ECL plus-Enhanced.



For full product information, images and publications, please visit our [website](https://www.genetex.com).