

PI3 kinase p110 gamma antibody [C3], C-term

Cat. No. GTX104639

Host	Rabbit
Clonality	Polyclonal
Isotype	IgG
Applications	WB, IHC-P
Reactivity	Human, Mouse, Rat

Package
100 µl, 25 µl

Applications

Application Note

*Optimal dilutions/concentrations should be determined by the researcher.

Suggested dilution	Recommended dilution
WB	1:500-1:3000
IHC-P	1:100-1:1000

Not tested in other applications.

Calculated MW 126 kDa. ([Note](#))

Properties

Form	Liquid
Buffer	PBS, 40% Glycerol
Preservative	0.01% Thimerosal
Storage	Store as concentrated solution. Centrifuge briefly prior to opening vial. For short-term storage (1-2 weeks), store at 4°C. For long-term storage, aliquot and store at -20°C or below. Avoid multiple freeze-thaw cycles.
Concentration	1 mg/ml (Please refer to the vial label for the specific concentration.)
Immunogen	Carrier-protein conjugated synthetic peptide encompassing a sequence within the C-terminus region of human PI3 kinase p110 gamma. The exact sequence is proprietary.
Purification	Purified by antigen-affinity chromatography.
Conjugation	Unconjugated

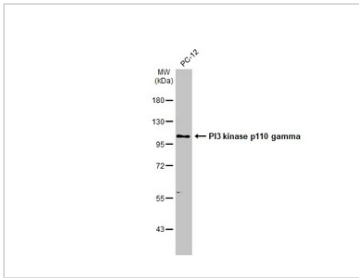
Note

For laboratory research use only. Not for any clinical, therapeutic, or diagnostic use in humans or animals. Not for animal or human consumption.

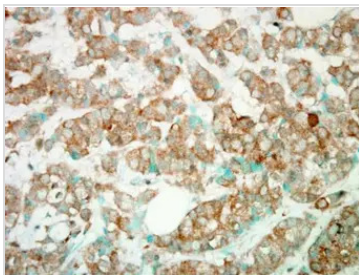
Purchasers shall not, and agree not to enable third parties to, analyze, copy, reverse engineer or otherwise attempt to determine the structure or sequence of the product.



For full product information, images and publications, please visit our [website](#).

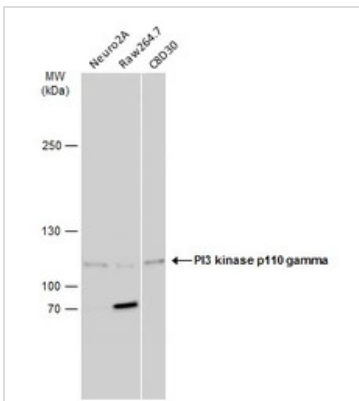
DATA IMAGES

GTX104639 WB Image

Whole cell extract (30 µg) was separated by 7.5% SDS-PAGE, and the membrane was blotted with PI3 kinase p110 gamma antibody [C3], C-term (GTX104639) diluted at 1:1000. The HRP-conjugated anti-rabbit IgG antibody (GTX213110-01) was used to detect the primary antibody.

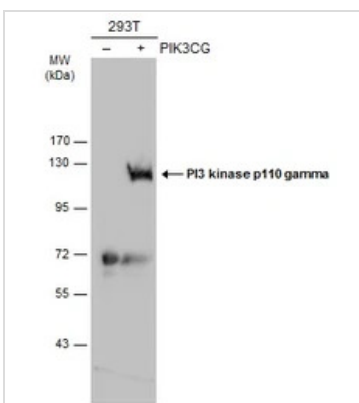

GTX104639 IHC-P Image

Immunohistochemical analysis of paraffin-embedded Human Breast Cancer, using PI3K gamma (GTX104639) antibody.

Antigen Retrieval: Trilogy™ (EDTA based, pH 8.0) buffer, 15min


GTX104639 WB Image

Various whole cell extracts (30 µg) were separated by 5% SDS-PAGE, and the membrane was blotted with PI3 kinase p110 gamma antibody [C3], C-term (GTX104639) diluted at 1:500. The HRP-conjugated anti-rabbit IgG antibody (GTX213110-01) was used to detect the primary antibody.


GTX104639 WB Image

Non-transfected (-) and transfected (+) 293T whole cell extracts (30 µg) were separated by 7.5% SDS-PAGE, and the membrane was blotted with PI3 kinase p110 gamma antibody [C3], C-term (GTX104639) diluted at 1:500. The HRP-conjugated anti-rabbit IgG antibody (GTX213110-01) was used to detect the primary antibody.



For full product information, images and publications, please visit our [website](https://www.genetex.com).