

CLPP antibody [C2C3], C-term

Cat. No. GTX104656

Host	Rabbit
Clonality	Polyclonal
Isotype	IgG
Application	WB, ICC/IF, IHC-P
Reactivity	Human

Reference (1)

★★★★☆ Review (1)

Package

100 µl, 25 µl

APPLICATION

Application Note

*Optimal dilutions/concentrations should be determined by the researcher.

Suggested dilution	Recommended dilution
WB	1:500-1:3000
ICC/IF	1:100-1:1000
IHC-P	1:100-1:1000

Not tested in other applications.

Calculated MW 30 kDa. ([Note](#))

PROPERTIES

Form	Liquid
Buffer	PBS, 10% Glycerol
Preservative	0.01% Thimerosal
Storage	Store as concentrated solution. Centrifuge briefly prior to opening vial. For short-term storage (1-2 weeks), store at 4°C. For long-term storage, aliquot and store at -20°C or below. Avoid multiple freeze-thaw cycles.
Concentration	1 mg/ml (Please refer to the vial label for the specific concentration.)
Immunogen	Carrier-protein conjugated synthetic peptide encompassing a sequence within the C-terminus region of human CLPP. The exact sequence is proprietary.
Purification	Purified by antigen-affinity chromatography.
Conjugation	Unconjugated

Note

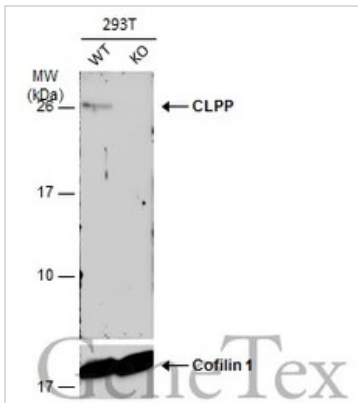
For laboratory research use only. Not for any clinical, therapeutic, or diagnostic use in humans or animals. Not for animal or human consumption.

Purchasers shall not, and agree not to enable third parties to, analyze, copy, reverse engineer or otherwise attempt to determine the structure or sequence of the product.



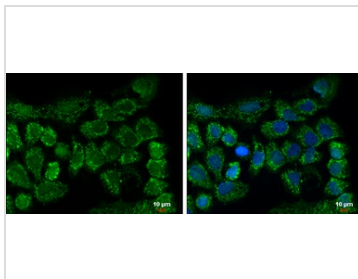
For full product information, images and publications, please visit our [website](#).

DATA IMAGES



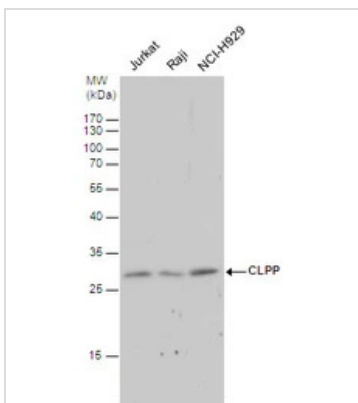
GTX104656 WB Image

Wild-type (WT) and CLPP knockout (KO) 293T cell extracts (30 µg) were separated by 12% SDS-PAGE, and the membrane was blotted with CLPP antibody [C2C3], C-term (GTX104656) diluted at 1:500. The HRP-conjugated anti-rabbit IgG antibody (GTX213110-01) was used to detect the primary antibody.



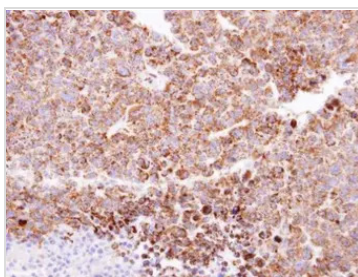
GTX104656 ICC/IF Image

CLPP antibody [C2C3], C-term detects CLPP protein at mitochondria by immunofluorescent analysis. Sample: A431 cells were fixed in 2% paraformaldehyde/culture medium at RT for 30 min. Green: CLPP protein stained by CLPP antibody [C2C3], C-term (GTX104656) diluted at 1:500. Blue: Hoechst 33342 staining. Scale bar = 10 µm.



GTX104656 WB Image

CLPP antibody detects CLPP protein by western blot analysis. Various whole cell extracts (30 µg) were separated by 12% SDS-PAGE, and the membrane was blotted with CLPP antibody (GTX104656) diluted by 1:500.



GTX104656 IHC-P Image

Immunohistochemical analysis of paraffin-embedded H520 xenograft, using CLPP (GTX104656) antibody at 1:100 dilution. Antigen Retrieval: Trilogy™ (EDTA based, pH 8.0) buffer, 15min



For full product information, images and publications, please visit our [website](https://www.genetex.com).