

CKII alpha antibody

Cat. No. GTX10474

Host	Rabbit
Clonality	Polyclonal
Isotype	IgG
Applications	WB, IP
Reactivity	Human, Mouse

Package
50 µg

Applications

Application Note

*Optimal dilutions/concentrations should be determined by the researcher.

Suggested dilution	Recommended dilution
WB	1:1000 - 1:5000
IP	2 - 10 µg/mg lysate

Not tested in other applications.

Calculated MW 41 kDa. ([Note](#))

Properties

Form	Liquid
Buffer	Tris-Citrate/Phosphate
Preservative	0.09% Sodium azide
Storage	Store as concentrated solution. Centrifuge briefly prior to opening vial. Store at 4°C. DO NOT FREEZE.
Concentration	1 mg/ml (Please refer to the vial label for the specific concentration.)
Immunogen	The immunogen recognized by this antibody maps to a region between residue 350 and the C-terminus (residue 350) of human Casein Kinase 2, alpha 2 using the numbering given in entry NP_001887.1 (GeneID 1459).
Purification	Purified by antigen-affinity chromatography
Conjugation	Unconjugated

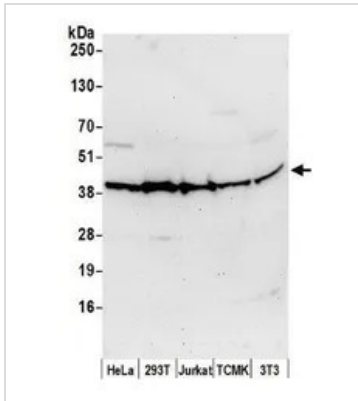
Note

For laboratory research use only. Not for any clinical, therapeutic, or diagnostic use in humans or animals. Not for animal or human consumption.

Purchasers shall not, and agree not to enable third parties to, analyze, copy, reverse engineer or otherwise attempt to determine the structure or sequence of the product.



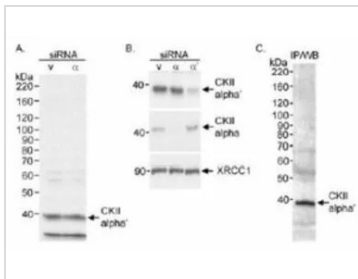
For full product information, images and publications, please visit our [website](#).

DATA IMAGES

GTX10474 WB Image

WB analysis of HeLa, 293T, Jurkat, mouse TCMK-1, and mouse NIH3T3 cell lysates in NETN lysis buffer using GTX10474 CKII alpha antibody.

Loading : 50µg

Dilution : 1 µg/ml


GTX10474 IP Image

IP analysis of HeLa cell lysate using GTX10474 CKII alpha antibody and CKII alpha' antibody.



For full product information, images and publications, please visit our [website](https://www.genetex.com).