

## Flotillin 1 antibody [C3], C-term

Cat. No. GTX104769

Host	Rabbit
Clonality	Polyclonal
Isotype	IgG
Applications	WB, IP
Reactivity	Human, Mouse, Rat, Hamster

References ( 6 )

★★★★☆ Review ( 1 )

Package

100 µl, 25 µl

## Applications

## Application Note

\*Optimal dilutions/concentrations should be determined by the researcher.

Suggested dilution	Recommended dilution
WB	1:500-1:3000
IP	1:100-1:500

Not tested in other applications.

**Calculated MW** 47 kDa. ( [Note](#) )

**Product Note** KO/KD validation is based on published data (PMID: 30801249).

## Properties

Form	Liquid
Buffer	0.1M Tris, 0.1M Glycine, 20% Glycerol
Preservative	0.01% Thimerosal
Storage	Store as concentrated solution. Centrifuge briefly prior to opening vial. For short-term storage (1-2 weeks), store at 4°C. For long-term storage, aliquot and store at -20°C or below. Avoid multiple freeze-thaw cycles.
Concentration	1.79 mg/ml (Please refer to the vial label for the specific concentration.)
Immunogen	Carrier-protein conjugated synthetic peptide encompassing a sequence within the C-terminus region of human Flotillin 1. The exact sequence is proprietary.
Purification	Purified by antigen-affinity chromatography.
Conjugation	Unconjugated

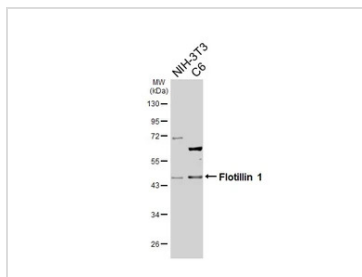
## Note

For laboratory research use only. Not for any clinical, therapeutic, or diagnostic use in humans or animals. Not for animal or human consumption.

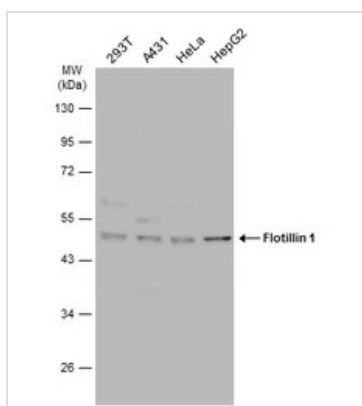
Purchasers shall not, and agree not to enable third parties to, analyze, copy, reverse engineer or otherwise attempt to determine the structure or sequence of the product.



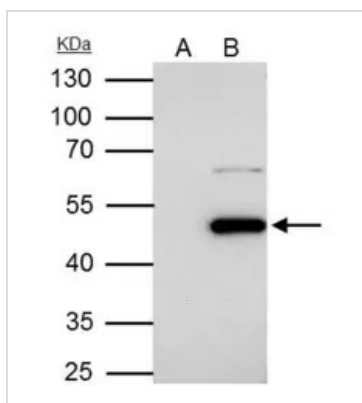
For full product information, images and publications, please visit our [website](#).

**DATA IMAGES**

**GTX104769 WB Image**

Various whole cell extracts (30 µg) were separated by 10% SDS-PAGE, and the membrane was blotted with Flotillin 1 antibody [C3], C-term (GTX104769) diluted at 1:1000. The HRP-conjugated anti-rabbit IgG antibody (GTX213110-01) was used to detect the primary antibody.


**GTX104769 WB Image**

Various whole cell extracts (30 µg) were separated by 10% SDS-PAGE, and the membrane was blotted with Flotillin 1 antibody [C3], C-term (GTX104769) diluted at 1:1000. The HRP-conjugated anti-rabbit IgG antibody (GTX213110-01) was used to detect the primary antibody, and the signal was developed with Trident ECL plus-Enhanced.


**GTX104769 IP Image**

Flotillin 1 antibody [C3], C-term immunoprecipitates Flotillin 1 protein in IP experiments.

IP samples: HCT-116 whole cell extract

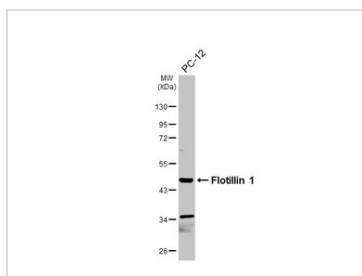
A. Control with 4 µg of preimmune Rabbit IgG

B. Immunoprecipitation of Flotillin 1 protein by 4 µg Flotillin 1 antibody [C3], C-term (GTX104769)

10 % SDS-PAGE

The immunoprecipitated Flotillin 1 protein was detected by Flotillin 1 antibody [C3], C-term (GTX104769) diluted at 1:1000.

[EasyBlot anti-rabbit IgG (GTX221666-01) was used as a secondary reagent]


**GTX104769 WB Image**

Whole cell extract (30 µg) was separated by 10% SDS-PAGE, and the membrane was blotted with Flotillin 1 antibody [C3], C-term (GTX104769) diluted at 1:1000. The HRP-conjugated anti-rabbit IgG antibody (GTX213110-01) was used to detect the primary antibody.



For full product information, images and publications, please visit our [website](https://www.genetex.com).