

## FBXL12 antibody [C2C3], C-term

**Cat. No. GTX104870**

|                     |              |
|---------------------|--------------|
| <b>Host</b>         | Rabbit       |
| <b>Clonality</b>    | Polyclonal   |
| <b>Isotype</b>      | IgG          |
| <b>Applications</b> | WB, IHC-P    |
| <b>Reactivity</b>   | Human, Mouse |

**Package**  
100 µl, 25 µl

## Applications

**Application Note**

\*Optimal dilutions/concentrations should be determined by the researcher.

| Suggested dilution | Recommended dilution |
|--------------------|----------------------|
| WB                 | 1:500-1:3000         |
| IHC-P              | 1:100-1:1000         |

Not tested in other applications.

**Calculated MW** 37 kDa. ([Note](#))

## Properties

|                      |  |
|----------------------|--|
| <b>Form</b>          | Liquid   |
| <b>Buffer</b>        | PBS, 10% Glycerol  |
| <b>Preservative</b>  | 0.01% Thimerosal   |
| <b>Storage</b>       | Store as concentrated solution. Centrifuge briefly prior to opening vial. For short-term storage (1-2 weeks), store at 4°C. For long-term storage, aliquot and store at -20°C or below. Avoid multiple freeze-thaw cycles. |
| <b>Concentration</b> | 1 mg/ml (Please refer to the vial label for the specific concentration.)   |
| <b>Immunogen</b>     | Carrier-protein conjugated synthetic peptide encompassing a sequence within the C-terminus region of human FBXL12. The exact sequence is proprietary.  |
| <b>Purification</b>  | Purified by antigen-affinity chromatography.   |
| <b>Conjugation</b>   | Unconjugated   |

**Note**

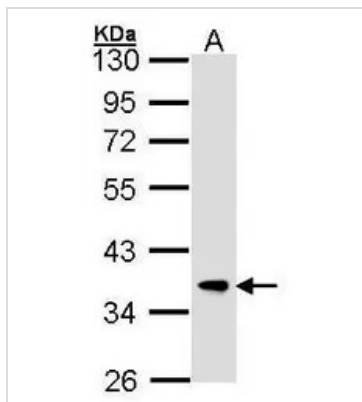
For laboratory research use only. Not for any clinical, therapeutic, or diagnostic use in humans or animals. Not for animal or human consumption.

Purchasers shall not, and agree not to enable third parties to, analyze, copy, reverse engineer or otherwise attempt to determine the structure or sequence of the product.



For full product information, images and publications, please visit our [website](#).

DATA IMAGES



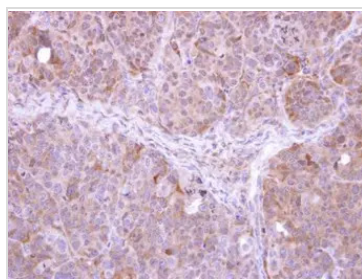
**GTX104870 WB Image**

Sample (30 ug of whole cell lysate)

A: Hep G2 (GTX27900)

10% SDS PAGE

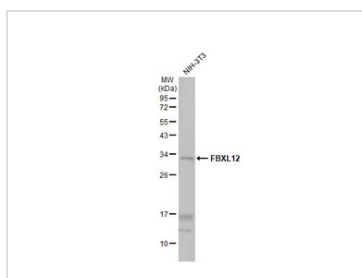
GTX104870 diluted at 1:1000



**GTX104870 IHC-P Image**

Immunohistochemical analysis of paraffin-embedded SW480 xenograft, using FBXL12(GTX104870) antibody at 1:500 dilution.

Antigen Retrieval: Trilogy™ (EDTA based, pH 8.0) buffer, 15min



**GTX104870 WB Image**

Whole cell extract (30 µg) was separated by 12% SDS-PAGE, and the membrane was blotted with FBXL12 antibody [C2C3], C-term (GTX104870) diluted at 1:1000. The HRP-conjugated anti-rabbit IgG antibody (GTX213110-01) was used to detect the primary antibody.



For full product information, images and publications, please visit our [website](#).