

NCOA2 antibody

Cat. No. GTX10491

Host	Rabbit
Clonality	Polyclonal
Isotype	IgG
Applications	WB, IP
Reactivity	Human, Mouse

References (1)

Package

50 µg

Applications

Application Note

*Optimal dilutions/concentrations should be determined by the researcher.

Suggested dilution	Recommended dilution
WB	1:1000 - 1:10000
IP	1 - 4 µg/mg lysate

Not tested in other applications.

Calculated MW 159 kDa. ([Note](#))

Properties

Form	Liquid
Buffer	Tris-Citrate/Phosphate
Preservative	0.09% Sodium azide
Storage	Store as concentrated solution. Centrifuge briefly prior to opening vial. Store at 4°C. DO NOT FREEZE.
Concentration	1 mg/ml (Please refer to the vial label for the specific concentration.)
Immunogen	The immunogen recognized by this antibody maps to a region between residues 700 and 750 of human Nuclear Receptor Coactivator 2 using the numbering given in entry NP_006531.1 (GenelD 10499).
Purification	Purified by antigen-affinity chromatography
Conjugation	Unconjugated

Note

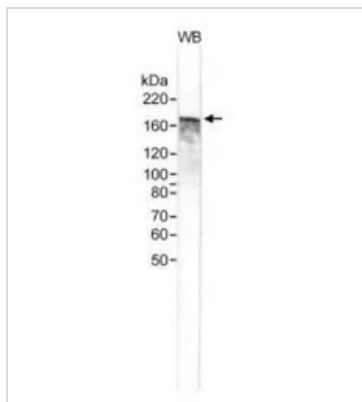
For laboratory research use only. Not for any clinical, therapeutic, or diagnostic use in humans or animals. Not for animal or human consumption.

Purchasers shall not, and agree not to enable third parties to, analyze, copy, reverse engineer or otherwise attempt to determine the structure or sequence of the product.



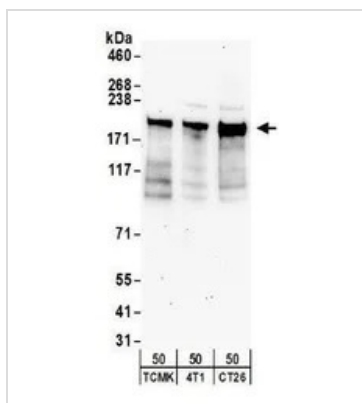
For full product information, images and publications, please visit our [website](#).

DATA IMAGES



GTX10491 WB Image

WB analysis of HeLa cell lysate using GTX10491 NCOA2 antibody.



GTX10491 WB Image

WB analysis of TCMK-1, 4T1, and CT26.WT cells using GTX10491 NCOA2 antibody.

Dilution : 1 µg/ml



For full product information, images and publications, please visit our [website](https://www.genetex.com).