

## IPMK antibody [N1C2]

Cat. No. GTX104954

Host	Rabbit
Clonality	Polyclonal
Isotype	IgG
Applications	WB, ICC/IF, IHC-P
Reactivity	Human, Mouse

References ( 1 )

Package

100 µl, 25 µl

## Applications

## Application Note

\*Optimal dilutions/concentrations should be determined by the researcher.

Suggested dilution	Recommended dilution
WB	1:500-1:3000
ICC/IF	1:100-1:1000
IHC-P	Assay dependent

Not tested in other applications.

Calculated MW 47 kDa. ( [Note](#) )

## Properties

Form	Liquid
Buffer	PBS, 20% Glycerol
Preservative	0.025% ProClin 300
Storage	Store as concentrated solution. Centrifuge briefly prior to opening vial. For short-term storage (1-2 weeks), store at 4°C. For long-term storage, aliquot and store at -20°C or below. Avoid multiple freeze-thaw cycles.
Concentration	1.46 mg/ml (Please refer to the vial label for the specific concentration.)
Immunogen	Recombinant protein encompassing a sequence within the center region of human IPMK. The exact sequence is proprietary.
Purification	Purified by antigen-affinity chromatography.
Conjugation	Unconjugated

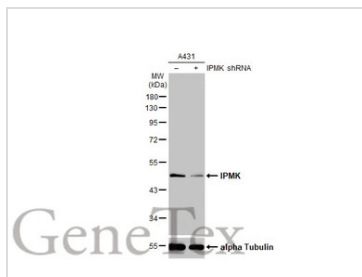
## Note

For laboratory research use only. Not for any clinical, therapeutic, or diagnostic use in humans or animals. Not for animal or human consumption.

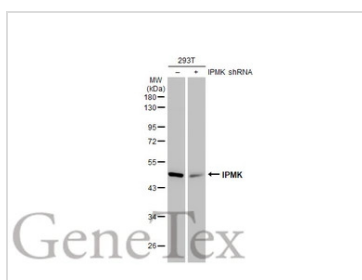
Purchasers shall not, and agree not to enable third parties to, analyze, copy, reverse engineer or otherwise attempt to determine the structure or sequence of the product.



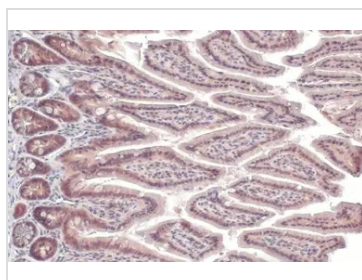
For full product information, images and publications, please visit our [website](#).

**DATA IMAGES**

**GTX104954 WB Image**

Non-transfected (–) and transfected (+) A431 whole cell extracts (30 µg) were separated by 10% SDS-PAGE, and the membrane was blotted with IPMK antibody [N1C2] (GTX104954) diluted at 1:3000. The HRP-conjugated anti-rabbit IgG antibody (GTX213110-01) was used to detect the primary antibody.


**GTX104954 WB Image**

Non-transfected (–) and transfected (+) 293T whole cell extracts (30 µg) were separated by 10% SDS-PAGE, and the membrane was blotted with IPMK antibody [N1C2] (GTX104954) diluted at 1:3000. The HRP-conjugated anti-rabbit IgG antibody (GTX213110-01) was used to detect the primary antibody.

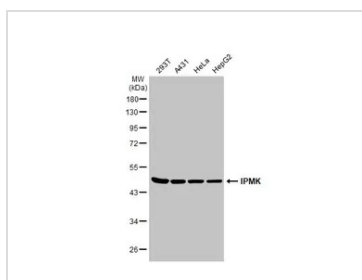

**GTX104954 IHC-P Image**

IPMK antibody [N1C2] detects IPMK protein at cytoplasm and nucleus by immunohistochemical analysis.

Sample: Paraffin-embedded mouse intestine.

IPMK stained by IPMK antibody [N1C2] (GTX104954) diluted at 1:500.

Antigen Retrieval: Citrate buffer, pH 6.0, 15 min


**GTX104954 WB Image**

Various whole cell extracts (30 µg) were separated by 10% SDS-PAGE, and the membrane was blotted with IPMK antibody [N1C2] (GTX104954) diluted at 1:1000. The HRP-conjugated anti-rabbit IgG antibody (GTX213110-01) was used to detect the primary antibody.



For full product information, images and publications, please visit our [website](https://www.genetex.com).