

MTHFD2 antibody [N1C3]

Cat. No. GTX104990

Host	Rabbit
Clonality	Polyclonal
Isotype	IgG
Application	WB, ICC/IF, IHC-P, IP
Reactivity	Human

Reference (4)

★★★★★ Review (1)

Package

100 µl, 25 µl

APPLICATION

Application Note

*Optimal dilutions/concentrations should be determined by the researcher.

Suggested dilution	Recommended dilution
WB	1:500-1:3000
ICC/IF	1:100-1:1000
IHC-P	1:100-1:1000
IP	1:100-1:500

Not tested in other applications.

Calculated MW 38 kDa. ([Note](#))

PROPERTIES

Form	Liquid
Buffer	PBS, 1% BSA, 20% Glycerol
Preservative	0.025% ProClin 300
Storage	Store as concentrated solution. Centrifuge briefly prior to opening vial. For short-term storage (1-2 weeks), store at 4°C. For long-term storage, aliquot and store at -20°C or below. Avoid multiple freeze-thaw cycles.
Concentration	0.13 mg/ml (Please refer to the vial label for the specific concentration.)
Immunogen	Recombinant protein encompassing a sequence within the center region of human MTHFD2. The exact sequence is proprietary.
Purification	Purified by antigen-affinity chromatography.
Conjugation	Unconjugated

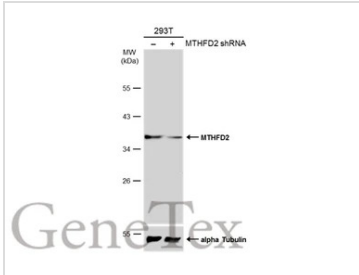


For full product information, images and publications, please visit our [website](#).

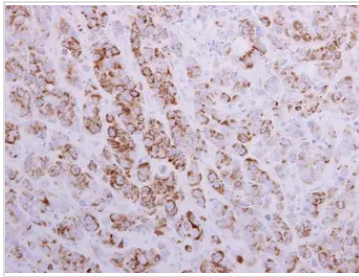
For laboratory research use only. Not for any clinical, therapeutic, or diagnostic use in humans or animals. Not for animal or human consumption.

Note

Purchasers shall not, and agree not to enable third parties to, analyze, copy, reverse engineer or otherwise attempt to determine the structure or sequence of the product.

DATA IMAGES

GTx104990 WB Image

Non-transfected (-) and transfected (+) 293T whole cell extracts (30 µg) were separated by 10% SDS-PAGE, and the membrane was blotted with MTHFD2 antibody [N1C3] (GTx104990) diluted at 1:3000. The HRP-conjugated anti-rabbit IgG antibody (GTx213110-01) was used to detect the primary antibody.

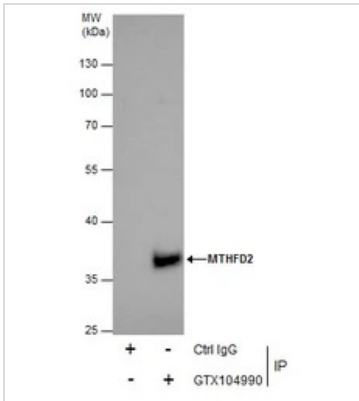

GTx104990 IHC-P Image

MTHFD2 antibody [N1C3] detects MTHFD2 protein at mitochondria by immunohistochemical analysis.

Sample: Paraffin-embedded human MCF7 xenograft.

MTHFD2 antibody [N1C3] (GTx104990) diluted at 1:500.

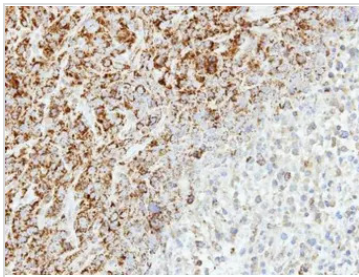
Antigen Retrieval: Citrate buffer, pH 6.0, 15 min


GTx104990 IP Image

Immunoprecipitation of MTHFD2 protein from 293T whole cell extracts using 5 µg of MTHFD2 antibody [N1C3] (GTx104990).

Western blot analysis was performed using MTHFD2 antibody [N1C3] (GTx104990).

EasyBlot anti-Rabbit IgG (GTx221666-01) was used as a secondary reagent.


GTx104990 IHC-P Image

Immunohistochemical analysis of paraffin-embedded SAS xenograft, using MTHFD2 (GTx104990) antibody at 1:500 dilution.

Antigen Retrieval: Trilogy™ (EDTA based, pH 8.0) buffer, 15min



For full product information, images and publications, please visit our [website](https://www.genetex.com).