

## RPS3A antibody

**Cat. No. GTX105020**

<b>Host</b>	Rabbit
<b>Clonality</b>	Polyclonal
<b>Isotype</b>	IgG
<b>Application</b>	WB, ICC/IF, IHC-P, IP
<b>Reactivity</b>	Human, Mouse, Rat

Reference ( 1 )  
 Package  
 100 µl, 25 µl

### APPLICATION

#### Application Note

\*Optimal dilutions/concentrations should be determined by the researcher.

Suggested dilution	Recommended dilution
WB	1:500-1:3000
ICC/IF	1:100-1:1000
IHC-P	1:100-1:1000
IP	Assay dependent

Not tested in other applications.

<b>Calculated MW</b>	30 kDa. ( <a href="#">Note</a> )
<b>Product Note</b>	Knockdown/Knockout validation was supported by references (PMID:26990993)

### PROPERTIES

<b>Form</b>	Liquid
<b>Buffer</b>	0.1M Tris, 0.1M Glycine, 10% Glycerol
<b>Preservative</b>	0.01% Thimerosal
<b>Storage</b>	Store as concentrated solution. Centrifuge briefly prior to opening vial. For short-term storage (1-2 weeks), store at 4°C. For long-term storage, aliquot and store at -20°C or below. Avoid multiple freeze-thaw cycles.
<b>Concentration</b>	1 mg/ml (Please refer to the vial label for the specific concentration.)
<b>Immunogen</b>	Recombinant protein encompassing a sequence within the center region of human RPS3A. The exact sequence is proprietary.
<b>Purification</b>	Purified by antigen-affinity chromatography.
<b>Conjugation</b>	Unconjugated

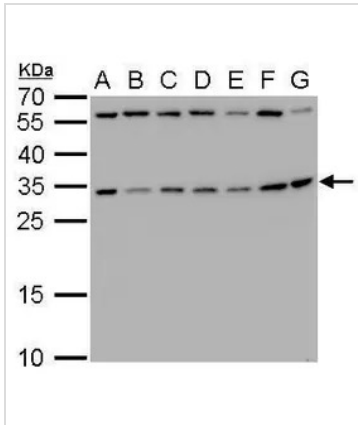


For full product information, images and publications, please visit our [website](#).

For laboratory research use only. Not for any clinical, therapeutic, or diagnostic use in humans or animals. Not for animal or human consumption.

**Note**

Purchasers shall not, and agree not to enable third parties to, analyze, copy, reverse engineer or otherwise attempt to determine the structure or sequence of the product.

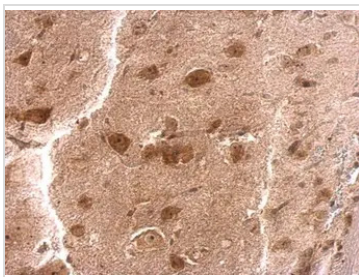
**DATA IMAGES**

**GTX105020 WB Image**

RPS3A antibody detects RPS3A protein by Western blot analysis.

- A. 30 µg Neuro2A whole cell lysate/extract
- B. 30 µg GL261 whole cell lysate/extract
- C. 30 µg C8D30 whole cell lysate/extract
- D. 30 µg NIH-3T3 whole cell lysate/extract
- E. 30 µg BCL-1 whole cell lysate/extract
- F. 30 µg Raw264.7 whole cell lysate/extract
- G. 30 µg C2C12 whole cell lysate/extract

12 % SDS-PAGE

RPS3A antibody (GTX105020) dilution: 1:1000

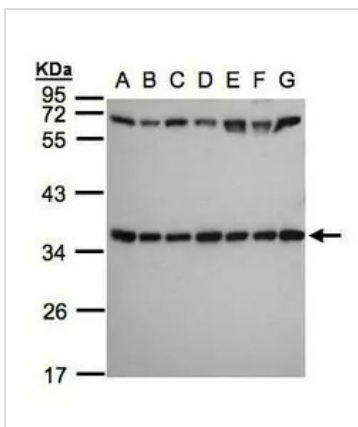

**GTX105020 IHC-P Image**

RPS3A antibody detects RPS3A protein at cytosol on mouse brain stem by immunohistochemical analysis.

Sample: Paraffin-embedded mouse brain stem.

RPS3A antibody (GTX105020) dilution: 1:200.

Antigen Retrieval: Trilogy™ (EDTA based, pH 8.0) buffer, 15min


**GTX105020 WB Image**

Sample(30 ug whole cell lysate)

- A: 293T
- B: A431 (GTX27909)
- C: H1299
- D: HeLa S3 (GTX14654)
- E: Hep G2 (GTX27900)
- F: MOLT4 (GTX27912)
- G: Raji (GTX27908)

12% SDS PAGE

GTX105020 diluted at 1:1000



For full product information, images and publications, please visit our [website](https://www.genetex.com).