

TFIIIE beta antibody

Cat. No. GTX105029

Host	Rabbit
Clonality	Polyclonal
Isotype	IgG
Applications	WB, IP, ChIP assay
Reactivity	Human

References (2)

Package

100 µl, 25 µl

Applications

Application Note

*Optimal dilutions/concentrations should be determined by the researcher.

Suggested dilution	Recommended dilution
WB	1:1000-1:10000
IP	1:100-1:500
ChIP assay	Assay dependent

Not tested in other applications.

Calculated MW 33 kDa. ([Note](#))

Properties

Form	Liquid
Buffer	PBS, 1% BSA, 20% Glycerol
Preservative	0.01% Thimerosal
Storage	Store as concentrated solution. Centrifuge briefly prior to opening vial. For short-term storage (1-2 weeks), store at 4°C. For long-term storage, aliquot and store at -20°C or below. Avoid multiple freeze-thaw cycles.
Concentration	1 mg/ml (Please refer to the vial label for the specific concentration.)
Immunogen	Recombinant protein encompassing a sequence within the center region of human TFIIIE beta. The exact sequence is proprietary.
Purification	Purified by antigen-affinity chromatography.
Conjugation	Unconjugated

Note

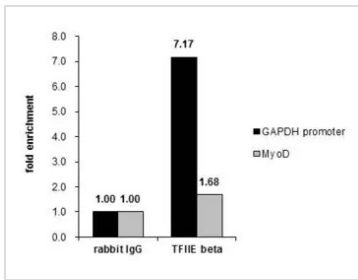
For laboratory research use only. Not for any clinical, therapeutic, or diagnostic use in humans or animals. Not for animal or human consumption.

Purchasers shall not, and agree not to enable third parties to, analyze, copy, reverse engineer or otherwise attempt to determine the structure or sequence of the product.



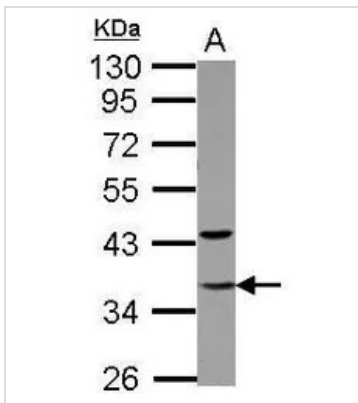
For full product information, images and publications, please visit our [website](#).

DATA IMAGES



GTX105029 ChIP assay Image

Cross-linked ChIP was performed with HeLa chromatin extract and 5 µg of either control rabbit IgG or anti-TFIIE beta antibody. The precipitated DNA was detected by PCR with primer set targeting to GAPDH promoter or MyoD.



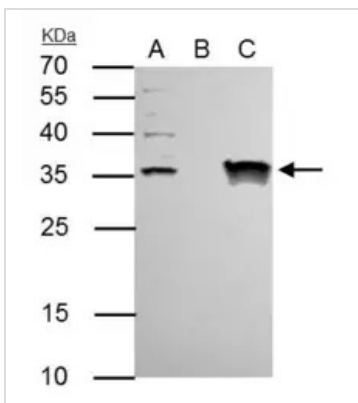
GTX105029 WB Image

Sample (30 ug of whole cell lysate)

A: Jurkat nucleus

10% SDS PAGE

GTX105029 diluted at 1:5000



GTX105029 IP Image

TFIIE beta antibody immunoprecipitates TFIIE beta protein in IP experiments. IP Sample: Jurkat whole cell lysate/extract A : 30 µg whole cell lysate/extract of TFIIE beta protein expressing Jurkat cells B : Control with 2.5 µg of pre-immune rabbit IgG C : Immunoprecipitation of TFIIE beta by 2.5 µg of TFIIE beta antibody (GTX105029) 12% SDS-PAGE The immunoprecipitated TFIIE beta protein was detected by TFIIE beta antibody (GTX105029) diluted at 1 : 1000. EasyBlot anti-rabbit IgG (HRP) (GTX221666-01) was used as a secondary reagent.



For full product information, images and publications, please visit our [website](https://www.genetex.com).