

## BMAL1 antibody [N1N3]

**Cat. No. GTX105060**

<b>Host</b>	Rabbit
<b>Clonality</b>	Polyclonal
<b>Isotype</b>	IgG
<b>Applications</b>	WB, ICC/IF
<b>Reactivity</b>	Human, Mouse

References ( 1 )

Package

100 µl, 25 µl

## Applications

**Application Note**

\*Optimal dilutions/concentrations should be determined by the researcher.

Suggested dilution	Recommended dilution
WB	1:500-1:3000
ICC/IF	1:100-1:1000

Not tested in other applications.

**Calculated MW** 69 kDa. ( [Note](#) )

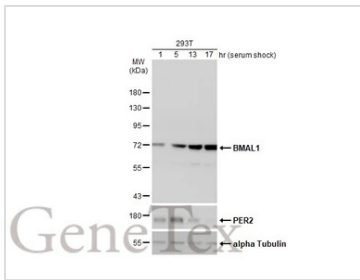
## Properties

<b>Form</b>	Liquid
<b>Buffer</b>	0.1M Tris, 0.1M Glycine, 10% Glycerol
<b>Preservative</b>	0.01% Thimerosal
<b>Storage</b>	Store as concentrated solution. Centrifuge briefly prior to opening vial. For short-term storage (1-2 weeks), store at 4°C. For long-term storage, aliquot and store at -20°C or below. Avoid multiple freeze-thaw cycles.
<b>Concentration</b>	0.65 mg/ml (Please refer to the vial label for the specific concentration.)
<b>Immunogen</b>	Recombinant protein encompassing a sequence within the center region of human BMAL1. The exact sequence is proprietary.
<b>Purification</b>	Purified by antigen-affinity chromatography.
<b>Conjugation</b>	Unconjugated
<b>Note</b>	For laboratory research use only. Not for any clinical, therapeutic, or diagnostic use in humans or animals. Not for animal or human consumption.  Purchasers shall not, and agree not to enable third parties to, analyze, copy, reverse engineer or otherwise attempt to determine the structure or sequence of the product.



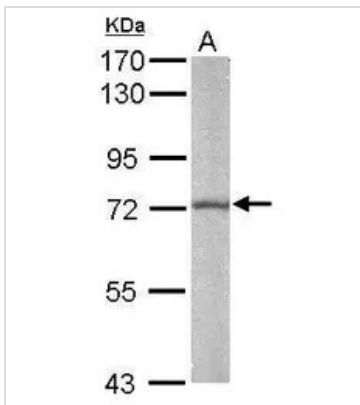
For full product information, images and publications, please visit our [website](#).

DATA IMAGES



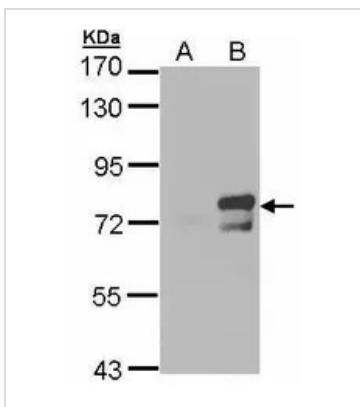
**GTX105060 WB Image**

Treated 293T whole cell extracts (30 µg) were separated by 7.5% SDS-PAGE, and the membranes were blotted with BMAL1 antibody [N1N3] (GTX105060) and PER2 antibody (GTX129688) diluted at 1:500. The HRP-conjugated anti-rabbit IgG antibody (GTX213110-01) was used to detect the primary antibody. The observed expression level is based on the publication: PMID: [16109848](https://pubmed.ncbi.nlm.nih.gov/16109848/), [28803917](https://pubmed.ncbi.nlm.nih.gov/28803917/)



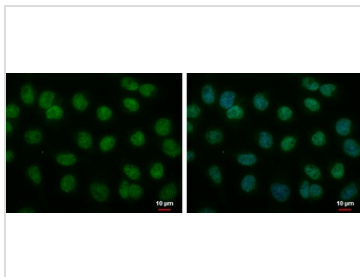
**GTX105060 WB Image**

Sample (50 ug of whole cell lysate)  
A: Mouse brain  
7.5% SDS PAGE  
GTX105060 diluted at 1:1000



**GTX105060 WB Image**

Western Blot analysis of BMAL1 expression in transfected 293T cell line by BMAL1 polyclonal antibody. A: Non-transfected lysate. B: BMAL1 transfected lysate. 7.5% SDS PAGE GTX105060 diluted at 1:500



**GTX105060 ICC/IF Image**

BMAL1 antibody [N1N3] detects BMAL1 protein at nucleus by immunofluorescent analysis. Sample: A375 cells were fixed in 4% paraformaldehyde at RT for 15 min. Green: BMAL1 protein stained by BMAL1 antibody [N1N3] (GTX105060) diluted at 1:500. Blue: Hoechst 33342 staining.



For full product information, images and publications, please visit our [website](http://www.genetex.com).