

PSMA6 antibody

Cat. No. GTX105061

Host	Rabbit
Clonality	Polyclonal
Isotype	IgG
Applications	WB, ICC/IF, IHC-Wm
Reactivity	Human, Mouse, Zebrafish

Package
100 µl, 25 µl

Applications

Application Note

*Optimal dilutions/concentrations should be determined by the researcher.

Suggested dilution	Recommended dilution
WB	1:500-1:3000
ICC/IF	1:100-1:1000
IHC-Wm	Assay dependent

Not tested in other applications.

Calculated MW 27 kDa. ([Note](#))

Properties

Form	Liquid
Buffer	0.1M Tris, 0.1M Glycine, 10% Glycerol
Preservative	0.01% Thimerosal
Storage	Store as concentrated solution. Centrifuge briefly prior to opening vial. For short-term storage (1-2 weeks), store at 4°C. For long-term storage, aliquot and store at -20°C or below. Avoid multiple freeze-thaw cycles.
Concentration	1 mg/ml (Please refer to the vial label for the specific concentration.)
Immunogen	Recombinant protein encompassing a sequence within the center region of human PSMA6. The exact sequence is proprietary.
Purification	Purified by antigen-affinity chromatography.
Conjugation	Unconjugated

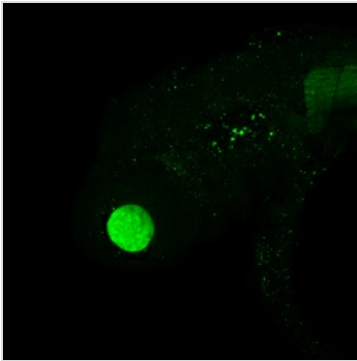
Note

For laboratory research use only. Not for any clinical, therapeutic, or diagnostic use in humans or animals. Not for animal or human consumption.

Purchasers shall not, and agree not to enable third parties to, analyze, copy, reverse engineer or otherwise attempt to determine the structure or sequence of the product.



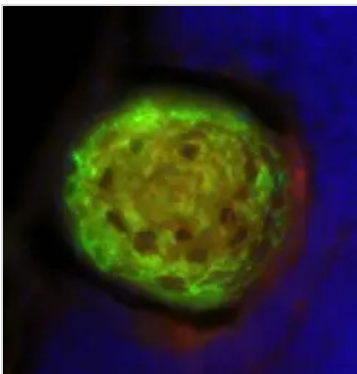
For full product information, images and publications, please visit our [website](#).

DATA IMAGES

GTx105061 IHC-Wm Image

PSMA6 antibody detects PSMA6 protein on zebrafish by whole mount immunohistochemical analysis.

Sample: 2 days-post-fertilization zebrafish embryo.

PSMA6 antibody (GTx105061) dilution: 1:100.

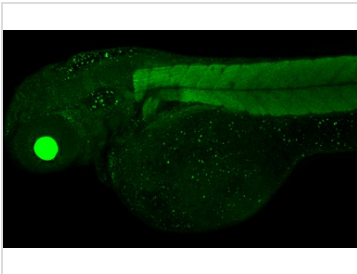

GTx105061 IHC-Wm Image

Immunofluorescent image of a section of the lens of a zebrafish embryo eye using psma6a antibody (GTx105061) at a 1:200 dilution.

Green: PSMA6

Red: Actin

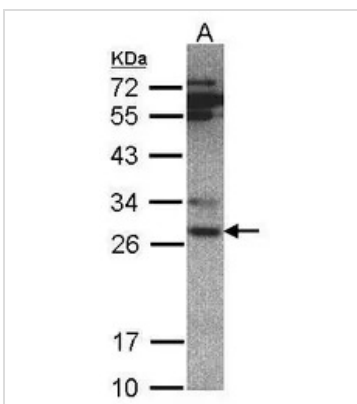
(This image was provided courtesy of the Schilling Lab at UC, Irvine.)


GTx105061 IHC-Wm Image

PSMA6 antibody detects PSMA6 protein on zebrafish by whole mount immunohistochemical analysis.

Sample: 2 days-post-fertilization zebrafish embryo.

PSMA6 antibody (GTx105061) dilution: 1:100.


GTx105061 WB Image

Sample(30 ug whole cell lysate)

A:Hep G2 (GTx27900)

7.5% SDS PAGE

GTx105061 diluted at 1:500



For full product information, images and publications, please visit our [website](https://www.genetex.com).