

SLC20A1 antibody [N3C2], Internal

Cat. No. GTX105062

Host	Rabbit
Clonality	Polyclonal
Isotype	IgG
Applications	WB, ICC/IF, IHC-P
Reactivity	Human, Mouse

References (2)

Package

100 µl, 25 µl

Applications

Application Note

*Optimal dilutions/concentrations should be determined by the researcher.

Suggested dilution	Recommended dilution
WB	1:500-1:3000
ICC/IF	Assay dependent
IHC-P	1:100-1:1000

Not tested in other applications.

Calculated MW 74 kDa. ([Note](#))

Properties

Form	Liquid
Buffer	PBS, 20% Glycerol
Preservative	0.025% ProClin 300
Storage	Store as concentrated solution. Centrifuge briefly prior to opening vial. For short-term storage (1-2 weeks), store at 4°C. For long-term storage, aliquot and store at -20°C or below. Avoid multiple freeze-thaw cycles.
Concentration	1.56 mg/ml (Please refer to the vial label for the specific concentration.)
Immunogen	Recombinant protein encompassing a sequence within the center region of human SLC20A1. The exact sequence is proprietary.
Purification	Purified by antigen-affinity chromatography.
Conjugation	Unconjugated

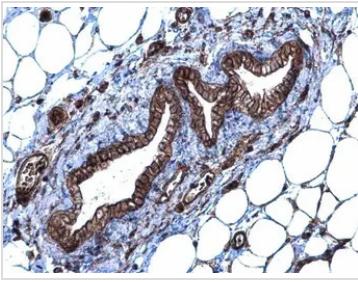
Note

For laboratory research use only. Not for any clinical, therapeutic, or diagnostic use in humans or animals. Not for animal or human consumption.

Purchasers shall not, and agree not to enable third parties to, analyze, copy, reverse engineer or otherwise attempt to determine the structure or sequence of the product.

For full product information, images and publications, please visit our [website](#).

DATA IMAGES



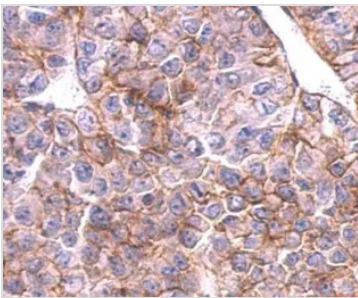
GTx105062 IHC-P Image

SLC20A1 antibody [N3C2], Internal detects SLC20A1 protein at membrane and cytoplasm on mouse mammary gland by immunohistochemical analysis.

Sample: Paraffin-embedded mouse mammary gland.

SLC20A1 antibody [N3C2], Internal (GTx105062) diluted at 1:500.

Antigen Retrieval: Trilogy™ (EDTA based, pH 8.0) buffer, 15min



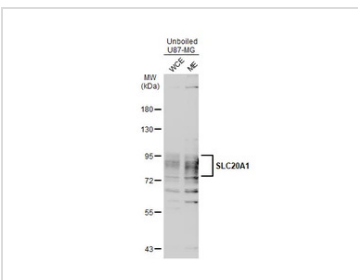
GTx105062 IHC-P Image

SLC20A1 antibody [N3C2], Internal detects SLC20A1 protein at cytosol and membrane on AGS xenograft by immunohistochemical analysis.

Sample: Paraffin-embedded AGS xenograft.

SLC20A1 antibody [N3C2], Internal (GTx105062) dilution: 1:500.

Antigen Retrieval: Trilogy™ (EDTA based, pH 8.0) buffer, 15min



GTx105062 WB Image

Unboiled U87-MG cell extracts (30 µg) were separated by 7.5% SDS-PAGE, and the membrane was blotted with SLC20A1 antibody [N3C2], Internal (GTx105062) diluted at 1:500. The HRP-conjugated anti-rabbit IgG antibody (GTx213110-01) was used to detect the primary antibody. (WCE: whole cell extract; ME: membrane extract)



For full product information, images and publications, please visit our [website](https://www.genetex.com).