

# LOXL2 antibody

**Cat. No. GTX105085**

|                    |                          |
|--------------------|--------------------------|
| <b>Host</b>        | Rabbit                   |
| <b>Clonality</b>   | Polyclonal               |
| <b>Isotype</b>     | IgG                      |
| <b>Application</b> | WB, ICC/IF, IHC-P, ELISA |
| <b>Reactivity</b>  | Human, Mouse             |

Reference ( 18 )  
 Package  
 100 µl, 25 µl

## APPLICATION

### Application Note

\*Optimal dilutions/concentrations should be determined by the researcher.

| Suggested dilution | Recommended dilution |
|--------------------|----------------------|
| WB                 | 1:500-1:10000        |
| ICC/IF             | 1:100-1:1000         |
| IHC-P              | 1:100-1:1000         |
| ELISA              | Assay dependent      |

Not tested in other applications.

**Calculated MW** 87 kDa. ( [Note](#) )

**Product Note** Mouse reactivity has been validated by IHC-P only, not yet been tested by other applications.

## PROPERTIES

|                      |  |
|----------------------|--|
| <b>Form</b>          | Liquid   |
| <b>Buffer</b>        | PBS, 20% Glycerol  |
| <b>Preservative</b>  | 0.025% ProClin 300   |
| <b>Storage</b>       | Store as concentrated solution. Centrifuge briefly prior to opening vial. For short-term storage (1-2 weeks), store at 4°C. For long-term storage, aliquot and store at -20°C or below. Avoid multiple freeze-thaw cycles. |
| <b>Concentration</b> | 1.02 mg/ml (Please refer to the vial label for the specific concentration.)  |
| <b>Immunogen</b>     | Recombinant protein encompassing a sequence within the center region of human LOXL2. The exact sequence is proprietary.  |
| <b>Purification</b>  | Purified by antigen-affinity chromatography.   |
| <b>Conjugation</b>   | Unconjugated   |



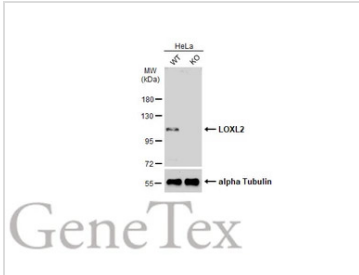
For full product information, images and publications, please visit our [website](#).

For laboratory research use only. Not for any clinical, therapeutic, or diagnostic use in humans or animals. Not for animal or human consumption.

## Note

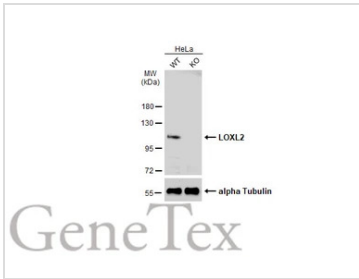
Purchasers shall not, and agree not to enable third parties to, analyze, copy, reverse engineer or otherwise attempt to determine the structure or sequence of the product.

## DATA IMAGES



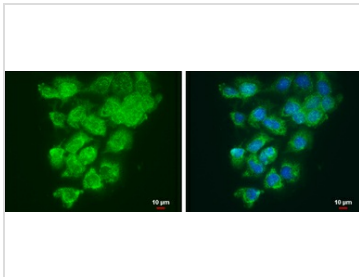
### GTX105085 WB Image

Wild-type (WT) and LOXL2 knockout (KO) HeLa cell extracts (30 µg) were separated by 7.5% SDS-PAGE, and the membrane was blotted with LOXL2 antibody (GTX105085) diluted at 1:500. The HRP-conjugated anti-rabbit IgG antibody (GTX213110-01) was used to detect the primary antibody.



### GTX105085 WB Image

Wild-type (WT) and LOXL2 knockout (KO) HeLa cell extracts (30 µg) were separated by 7.5% SDS-PAGE, and the membrane was blotted with LOXL2 antibody (GTX105085) diluted at 1:500. The HRP-conjugated anti-rabbit IgG antibody (GTX213110-01) was used to detect the primary antibody.



### GTX105085 ICC/IF Image

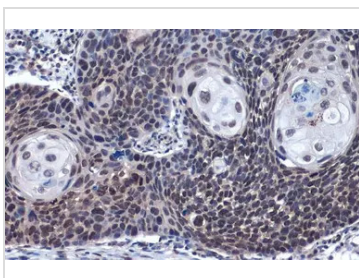
LOXL2 antibody detects LOXL2 protein at cytoplasm and nucleus by immunofluorescent analysis.

Sample: A431 cells were fixed in ice-cold MeOH for 5 min.

Green: LOXL2 protein stained by LOXL2 antibody (GTX105085) diluted at 1:500.

Blue: Hoechst 33342 staining.

Scale bar = 10 µm.



### GTX105085 IHC-P Image

LOXL2 antibody detects LOXL2 protein at nucleus by immunohistochemical analysis.

Sample: Paraffin-embedded human esophageal carcinoma.

LOXL2 stained by LOXL2 antibody (GTX105085) diluted at 1:3000.

Antigen Retrieval: Citrate buffer, pH 6.0, 15 min



For full product information, images and publications, please visit our [website](https://www.genetex.com).