

## RENT1 antibody

Cat. No. GTX10510

Host	Goat
Clonality	Polyclonal
Isotype	IgG
Applications	WB
Reactivity	Human, Mouse

**Package**  
50 µg

## Applications

## Application Note

\*Optimal dilutions/concentrations should be determined by the researcher.

Suggested dilution	Recommended dilution
WB	1:1

Not tested in other applications.

**Calculated MW** 124 kDa. ( [Note](#) )

## Properties

Form	Liquid
Buffer	Tris-Citrate/Phosphate
Preservative	0.09% Sodium azide
Storage	Store as concentrated solution. Centrifuge briefly prior to opening vial. Store at 4°C. DO NOT FREEZE.
Concentration	1 mg/ml (Please refer to the vial label for the specific concentration.)
Immunogen	The immunogen recognized by this antibody maps to a region between residue 250 and 300 of human Regulator of Nonsense Transcripts 1 (up-frameshift mutation 1 homolog) using the numbering given in entry NP_002902.2 (GenelD 5976).
Purification	Purified by antigen-affinity chromatography
Conjugation	Unconjugated

## Note

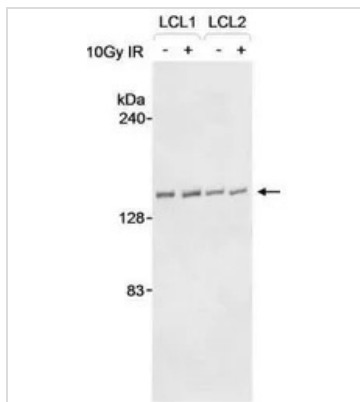
For laboratory research use only. Not for any clinical, therapeutic, or diagnostic use in humans or animals. Not for animal or human consumption.

Purchasers shall not, and agree not to enable third parties to, analyze, copy, reverse engineer or otherwise attempt to determine the structure or sequence of the product.



For full product information, images and publications, please visit our [website](#).

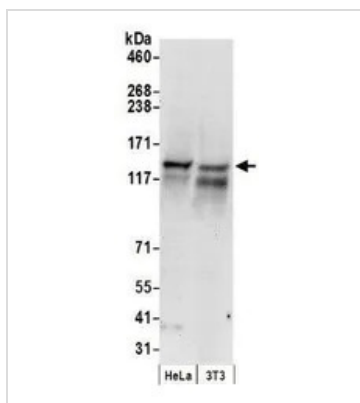
## DATA IMAGES



### GTX10510 WB Image

WB analysis of IR treated or non-treated LCL1 and LCL2 cell lysate using GTX10510 RENT1 antibody.

Dilution : 1 µg/ml



### GTX10510 WB Image

WB analysis of HeLa and NIH-3T3 cell lysate using GTX10510 RENT1 antibody.

Dilution : 0.4 µg/ml

Loading : 50µg



For full product information, images and publications, please visit our [website](https://www.genetex.com).