

OTC antibody

Cat. No. GTX105140

Host	Rabbit
Clonality	Polyclonal
Isotype	IgG
Applications	WB, IHC-P, IHC-Fr
Reactivity	Human, Mouse

References (4)

Package

100 µl, 25 µl

Applications

Application Note

*Optimal dilutions/concentrations should be determined by the researcher.

Suggested dilution	Recommended dilution
WB	1:500-1:30000
IHC-P	1:100-1:1000
IHC-Fr	Assay dependent

Not tested in other applications.

Calculated MW 40 kDa. ([Note](#))

Properties

Form	Liquid
Buffer	PBS, 20% Glycerol
Preservative	0.025% ProClin 300
Storage	Store as concentrated solution. Centrifuge briefly prior to opening vial. For short-term storage (1-2 weeks), store at 4°C. For long-term storage, aliquot and store at -20°C or below. Avoid multiple freeze-thaw cycles.
Concentration	0.65 mg/ml (Please refer to the vial label for the specific concentration.)
Immunogen	Recombinant protein encompassing a sequence within the center region of human OTC. The exact sequence is proprietary.
Purification	Purified by antigen-affinity chromatography.
Conjugation	Unconjugated

Note

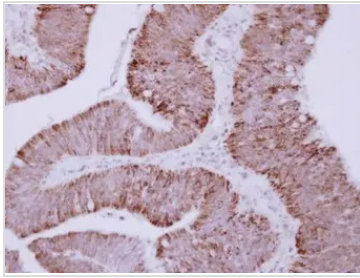
For laboratory research use only. Not for any clinical, therapeutic, or diagnostic use in humans or animals. Not for animal or human consumption.

Purchasers shall not, and agree not to enable third parties to, analyze, copy, reverse engineer or otherwise attempt to determine the structure or sequence of the product.



For full product information, images and publications, please visit our [website](#).

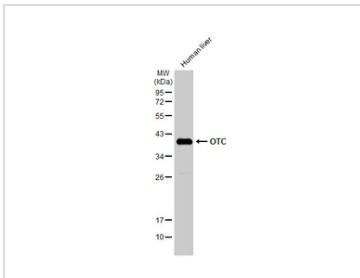
DATA IMAGES



GTXT105140 IHC-P Image

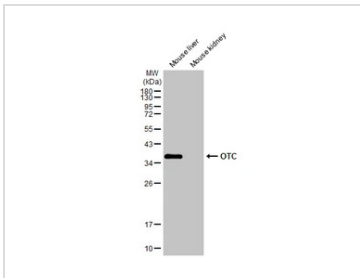
Immunohistochemical analysis of paraffin-embedded human colon carcinoma, using OTC (GTXT105140) antibody at 1:250 dilution.

Antigen Retrieval: Trilogy™ (EDTA based, pH 8.0) buffer, 15min



GTXT105140 WB Image

Human tissue extract (5 µg) was separated by 12% SDS-PAGE, and the membrane was blotted with OTC antibody (GTXT105140) diluted at 1:500. The HRP-conjugated anti-rabbit IgG antibody (GTXT213110-01) was used to detect the primary antibody.



GTXT105140 WB Image

Various tissue extracts (50 µg) were separated by 12% SDS-PAGE, and the membrane was blotted with OTC antibody (GTXT105140) diluted at 1:1000. The HRP-conjugated anti-rabbit IgG antibody (GTXT213110-01) was used to detect the primary antibody.



For full product information, images and publications, please visit our [website](https://www.genetex.com).