

HADH antibody

Cat. No. GTX105167

Host	Rabbit
Clonality	Polyclonal
Isotype	IgG
Application	WB, ICC/IF, IHC-P, IP
Reactivity	Human, Mouse, Rat

Reference (2)
 Package
 100 µl, 25 µl

APPLICATION

Application Note

*Optimal dilutions/concentrations should be determined by the researcher.

Suggested dilution	Recommended dilution
WB	1:500-1:3000
ICC/IF	1:100-1:1000
IHC-P	1:100-1:1000
IP	1:100-1:500

Not tested in other applications.

Calculated MW 34 kDa. ([Note](#))

PROPERTIES

Form	Liquid
Buffer	PBS, 1% BSA, 20% Glycerol
Preservative	0.01% Thimerosal
Storage	Store as concentrated solution. Centrifuge briefly prior to opening vial. For short-term storage (1-2 weeks), store at 4°C. For long-term storage, aliquot and store at -20°C or below. Avoid multiple freeze-thaw cycles.
Concentration	1 mg/ml (Please refer to the vial label for the specific concentration.)
Immunogen	Recombinant protein encompassing a sequence within the center region of human HADH. The exact sequence is proprietary.
Purification	Purified by antigen-affinity chromatography.
Conjugation	Unconjugated

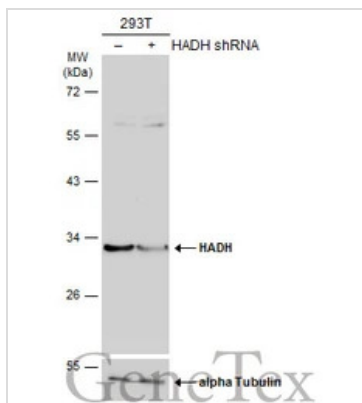


For full product information, images and publications, please visit our [website](#).

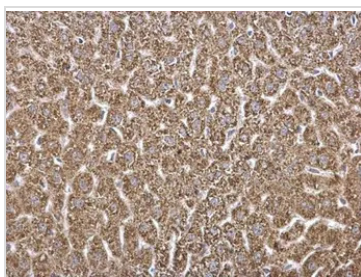
For laboratory research use only. Not for any clinical, therapeutic, or diagnostic use in humans or animals. Not for animal or human consumption.

Note

Purchasers shall not, and agree not to enable third parties to, analyze, copy, reverse engineer or otherwise attempt to determine the structure or sequence of the product.

DATA IMAGES

GTx105167 WB Image

Non-transfected (-) and transfected (+) 293T whole cell extracts (30 µg) were separated by 10% SDS-PAGE, and the membrane was blotted with HADH antibody (GTx105167) diluted at 1:1000. The HRP-conjugated anti-rabbit IgG antibody (GTx213110-01) was used to detect the primary antibody, and the signal was developed with Trident ECL plus-Enhanced.

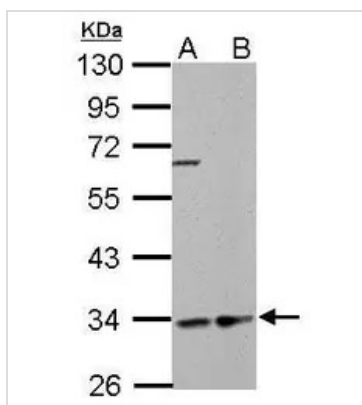

GTx105167 IHC-P Image

HADH antibody detects HADH protein at mitochondria on mouse liver by immunohistochemical analysis.

Sample: Paraffin-embedded mouse pancreas.

HADH antibody (GTx105167) dilution: 1:500.

Antigen Retrieval: Trilogy™ (EDTA based, pH 8.0) buffer, 15min


GTx105167 WB Image

HADH antibody detects HADH protein by Western blot analysis.

A. 30 µg GL261 whole cell lysate/extract

B. 30 µg C8D30 whole cell lysate/extract

10 % SDS-PAGE

HADH antibody (GTx105167) dilution: 1:1000



For full product information, images and publications, please visit our [website](https://www.genetex.com).