

OCT1 antibody

Cat. No. GTX105202

Host	Rabbit
Clonality	Polyclonal
Isotype	IgG
Application	WB, ICC/IF, IHC-P, IP
Reactivity	Human, Rat

Reference (3)
 Package
 100 µl, 25 µl

APPLICATION

Application Note

*Optimal dilutions/concentrations should be determined by the researcher.

Suggested dilution	Recommended dilution
WB	1:500-1:3000
ICC/IF	1:100-1:1000
IHC-P	1:100-1:1000
IP	1:100-1:500

Not tested in other applications.

Calculated MW 76 kDa. ([Note](#))

PROPERTIES

Form	Liquid
Buffer	PBS, 1% BSA, 20% Glycerol
Preservative	0.025% ProClin 300
Storage	Store as concentrated solution. Centrifuge briefly prior to opening vial. For short-term storage (1-2 weeks), store at 4°C. For long-term storage, aliquot and store at -20°C or below. Avoid multiple freeze-thaw cycles.
Concentration	0.49 mg/ml (Please refer to the vial label for the specific concentration.)
Immunogen	Recombinant protein encompassing a sequence within the center region of human OCT1. The exact sequence is proprietary.
Purification	Purified by antigen-affinity chromatography.
Conjugation	Unconjugated

Note

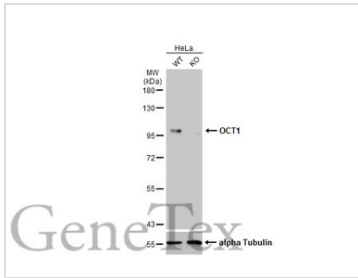
For laboratory research use only. Not for any clinical, therapeutic, or diagnostic use in humans or animals. Not for animal or human consumption.

Purchasers shall not, and agree not to enable third parties to, analyze, copy, reverse engineer or otherwise attempt to determine the structure or sequence of the product.



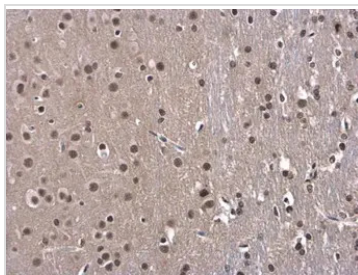
For full product information, images and publications, please visit our [website](#).

DATA IMAGES



GTX105202 WB Image

Wild-type (WT) and OCT1 knockout (KO) HeLa cell extracts (30 µg) were separated by 7.5% SDS-PAGE, and the membrane was blotted with OCT1 antibody (GTX105202) diluted at 1:2000. The HRP-conjugated anti-rabbit IgG antibody (GTX213110-01) was used to detect the primary antibody.



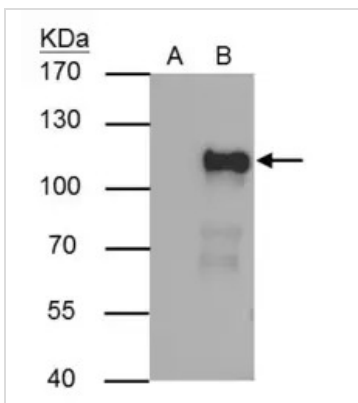
GTX105202 IHC-P Image

OCT1 antibody detects OCT1 protein at nucleus in rat brain by immunohistochemical analysis.

Sample: Paraffin-embedded rat brain.

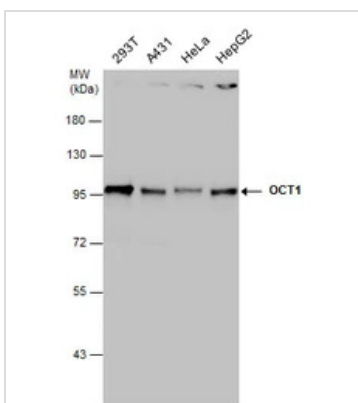
OCT1 antibody (GTX105202) diluted at 1:500.

Antigen Retrieval: Citrate buffer, pH 6.0, 15 min



GTX105202 IP Image

OCT1 antibody immunoprecipitates OCT1 protein in IP experiments. IP Sample: 293T whole cell lysate/extract A : Control with 2.5 µg of pre-immune rabbit IgG B : Immunoprecipitation of OCT1 by 2.5 µg of OCT1 antibody (GTX105202) 7.5% SDS-PAGE The immunoprecipitated OCT1 protein was detected by OCT1 antibody (GTX105202) diluted at 1 : 1000. EasyBlot anti-rabbit IgG (HRP) (GTX221666-01) was used as a secondary reagent.



GTX105202 WB Image

Various whole cell extracts (30 µg) were separated by 7.5% SDS-PAGE, and the membrane was blotted with OCT1 antibody (GTX105202) diluted at 1:1000.



For full product information, images and publications, please visit our [website](https://www.genetex.com).