

## TNFAIP2 antibody [C1C3]

Cat. No. GTX105256

<b>Host</b>	Rabbit
<b>Clonality</b>	Polyclonal
<b>Isotype</b>	IgG
<b>Applications</b>	WB, ICC/IF, IHC-P
<b>Reactivity</b>	Human, Mouse

**Package**  
100 µl, 25 µl

## Applications

**Application Note**

\*Optimal dilutions/concentrations should be determined by the researcher.

Suggested dilution	Recommended dilution
WB	1:500-1:3000
ICC/IF	Assay dependent
IHC-P	1:100-1:1000

Not tested in other applications.

**Calculated MW** 73 kDa. ([Note](#))

## Properties

<b>Form</b>	Liquid
<b>Buffer</b>	PBS, 1% BSA, 20% Glycerol
<b>Preservative</b>	0.025% ProClin 300
<b>Storage</b>	Store as concentrated solution. Centrifuge briefly prior to opening vial. For short-term storage (1-2 weeks), store at 4°C. For long-term storage, aliquot and store at -20°C or below. Avoid multiple freeze-thaw cycles.
<b>Concentration</b>	0.17 mg/ml (Please refer to the vial label for the specific concentration.)
<b>Immunogen</b>	Recombinant protein encompassing a sequence within the center region of human TNFAIP2. The exact sequence is proprietary.
<b>Purification</b>	Purified by antigen-affinity chromatography.
<b>Conjugation</b>	Unconjugated

**Note**

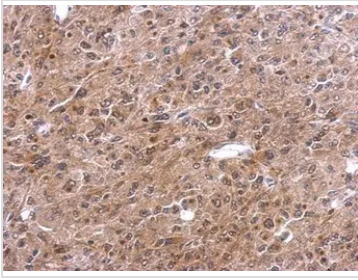
For laboratory research use only. Not for any clinical, therapeutic, or diagnostic use in humans or animals. Not for animal or human consumption.

Purchasers shall not, and agree not to enable third parties to, analyze, copy, reverse engineer or otherwise attempt to determine the structure or sequence of the product.



For full product information, images and publications, please visit our [website](#).

## DATA IMAGES

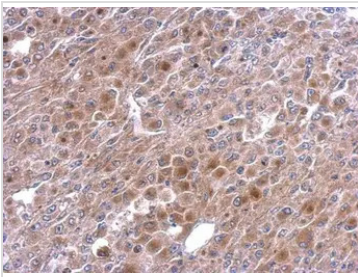
**GTX105256 IHC-P Image**

TNFalpha-IP 2 antibody [C1C3] detects TNFalpha-IP 2 protein at cytosol on HeLa xenograft by immunohistochemical analysis.

Sample: Paraffin-embedded HeLa xenograft.

TNFalpha-IP 2 antibody [C1C3] (GTX105256) dilution: 1:500.

Antigen Retrieval: Trilogy™ (EDTA based, pH 8.0) buffer, 15min

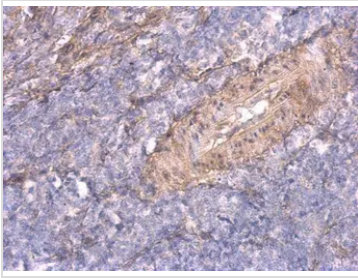
**GTX105256 IHC-P Image**

TNFalpha-IP 2 antibody [C1C3] detects TNFalpha-IP 2 protein at cytosol on HeLa xenograft by immunohistochemical analysis.

Sample: Paraffin-embedded HeLa xenograft.

TNFalpha-IP 2 antibody [C1C3] (GTX105256) dilution: 1:500.

Antigen Retrieval: Trilogy™ (EDTA based, pH 8.0) buffer, 15min

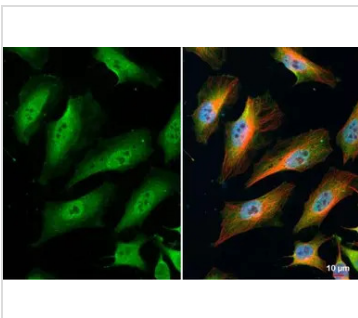
**GTX105256 IHC-P Image**

TNFalpha-IP 2 antibody [C1C3] detects TNFalpha-IP 2 protein at cytosol on mouse spleen by immunohistochemical analysis.

Sample: Paraffin-embedded mouse spleen.

TNFalpha-IP 2 antibody [C1C3] (GTX105256) dilution: 1:500.

Antigen Retrieval: Trilogy™ (EDTA based, pH 8.0) buffer, 15min

**GTX105256 ICC/IF Image**

TNFAIP2 antibody [C1C3] detects TNFAIP2 protein at cytoplasm and nucleus by immunofluorescent analysis.

Sample: HeLa cells were fixed in 4% paraformaldehyde at RT for 15 min.

Green: TNFAIP2 stained by TNFAIP2 antibody [C1C3] (GTX105256) diluted at 1:500.

Red: alpha Tubulin, a cytoskeleton marker, stained by alpha Tubulin antibody [GT114] (GTX628802) diluted at 1:1000.

Blue: Fluoroshield with DAPI (GTX30920).



For full product information, images and publications, please visit our [website](#).