

# PSR antibody

**Cat. No. GTX10526**

<b>Host</b>	Rabbit
<b>Clonality</b>	Polyclonal
<b>Isotype</b>	IgG
<b>Applications</b>	WB, IP
<b>Reactivity</b>	Human, Mouse

**Package**  
100 µl

## Applications

### Application Note

\*Optimal dilutions/concentrations should be determined by the researcher.

Suggested dilution	Recommended dilution
WB	1:500~1:1000
IP	Assay dependent

Not tested in other applications.

**Calculated MW** 46 kDa. ( [Note](#) )

### Product Note

Anti-Phosphatidylserine Receptor (PSR) recognizes human and mouse phosphatidylserine receptor (PSR). Detection of the phosphatidylserine receptor by immunoblotting is specifically inhibited by the immunizing peptide, a synthetic peptide corresponding to amino acid residues 363-381 of the human phosphatidylserine receptor, conjugated to maleimide-activated KLH as immunogen.

## Properties

<b>Form</b>	Liquid
<b>Buffer</b>	PBS, 1% BSA
<b>Preservative</b>	15mM Sodium azide
<b>Storage</b>	Store as concentrated solution. Centrifuge briefly prior to opening vial. For short-term storage (1-2 weeks), store at 4°C. For long-term storage, aliquot and store at -20°C or below. Avoid multiple freeze-thaw cycles.
<b>Concentration</b>	1-1.5 mg/ml (Please refer to the vial label for the specific concentration.)
<b>Immunogen</b>	synthetic peptide corresponding to amino acid residues 363-381 of the human phosphatidylserine receptor conjugated to maleimide-activated KLH. The corresponding sequence in mouse differs by one amino acid.
<b>Purification</b>	Purified by affinity chromatography
<b>Conjugation</b>	Unconjugated



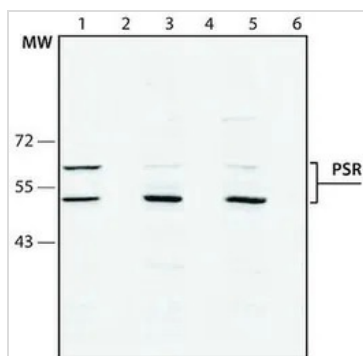
For full product information, images and publications, please visit our [website](#).

For laboratory research use only. Not for any clinical, therapeutic, or diagnostic use in humans or animals. Not for animal or human consumption.

## Note

Purchasers shall not, and agree not to enable third parties to, analyze, copy, reverse engineer or otherwise attempt to determine the structure or sequence of the product.

## DATA IMAGES

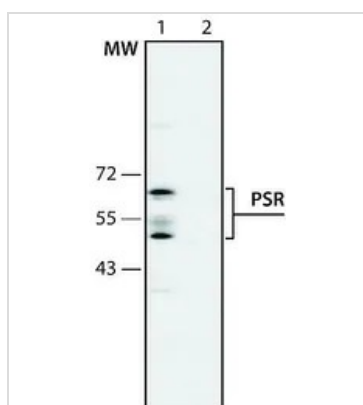


### GTX10526 WB Image

WB analysis of (Lane 1- 2) HeLa, (Lane 3 -4) Jurkat, (Lane 5- 6) Molt-4 cell lysate using GTX10526 PSR antibody.

Lane 1,3,5: Antibody 1 µg/mL

Lane 2,4,6: Antibody 1 µg/mL + PSR immunizing peptide

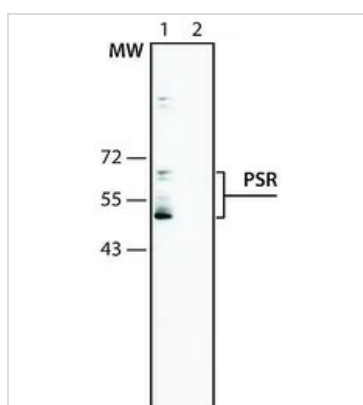


### GTX10526 WB Image

WB analysis of A431 cell lysate using GTX10526 PSR antibody.

Lane 1 : Antibody 1 µg/mL

Lane 2 : Antibody 1 µg/mL + PSR immunizing peptide



### GTX10526 WB Image

WB analysis of K562 cell lysate using GTX10526 PSR antibody.

Lane 1 : Antibody 1 µg/mL

Lane 2 : Antibody 1 µg/mL + PSR immunizing peptide



For full product information, images and publications, please visit our [website](https://www.genetex.com).