

NDUFS1 antibody

Cat. No. GTX105270

| | |
|---------------------|-------------------|
| Host | Rabbit |
| Clonality | Polyclonal |
| Isotype | IgG |
| Applications | WB, IHC-P |
| Reactivity | Human, Mouse, Rat |

References (2)

Package

100 µl, 25 µl

Applications

Application Note

*Optimal dilutions/concentrations should be determined by the researcher.

| Suggested dilution | Recommended dilution |
|--------------------|----------------------|
| WB | 1:500-1:10000 |
| IHC-P | 1:100-1:1000 |

Not tested in other applications.

Calculated MW 79 kDa. ([Note](#))

Properties

| | |
|----------------------|--|
| Form | Liquid |
| Buffer | 0.1M Tris, 0.1M Glycine, 10% Glycerol |
| Preservative | 0.01% Thimerosal |
| Storage | Store as concentrated solution. Centrifuge briefly prior to opening vial. For short-term storage (1-2 weeks), store at 4°C. For long-term storage, aliquot and store at -20°C or below. Avoid multiple freeze-thaw cycles. |
| Concentration | 0.2 mg/ml (Please refer to the vial label for the specific concentration.) |
| Immunogen | Recombinant protein encompassing a sequence within the center region of human NDUFS1. The exact sequence is proprietary. |
| Purification | Purified by antigen-affinity chromatography. |
| Conjugation | Unconjugated |

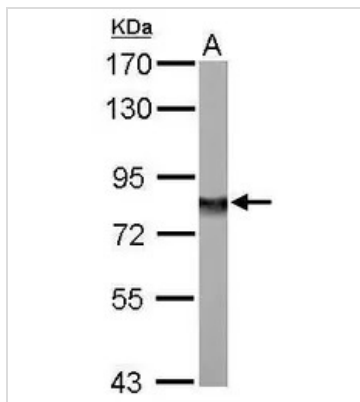
Note

For laboratory research use only. Not for any clinical, therapeutic, or diagnostic use in humans or animals. Not for animal or human consumption.

Purchasers shall not, and agree not to enable third parties to, analyze, copy, reverse engineer or otherwise attempt to determine the structure or sequence of the product.



For full product information, images and publications, please visit our [website](#).

DATA IMAGES

GTx105270 WB Image

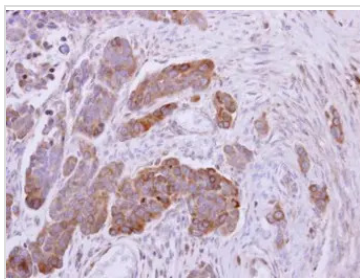
NDUFS1 antibody detects NDUFS1 protein by western blot analysis.

A: 50 µg rat brain lysate/extract

7.5% SDS-PAGE

NDUFS1 antibody (GTx105270) dilution: 1:500

The HRP-conjugated anti-rabbit IgG antibody (GTx213110-01) was used to detect the primary antibody.

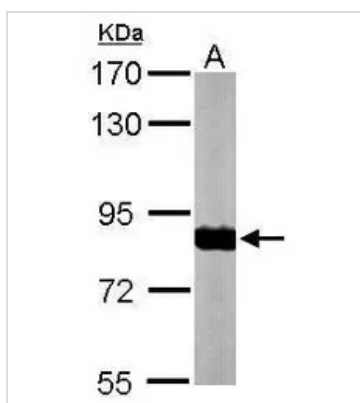

GTx105270 IHC-P Image

NDUFS1 antibody detects NDUFS1 protein at mitochondria on human ovarian carcinoma by immunohistochemical analysis.

Sample: Paraffin-embedded ovarian carcinoma.

NDUFS1 antibody (GTx105270) dilution: 1:250.

Antigen Retrieval: Trilogy™ (EDTA based, pH 8.0) buffer, 15min


GTx105270 WB Image

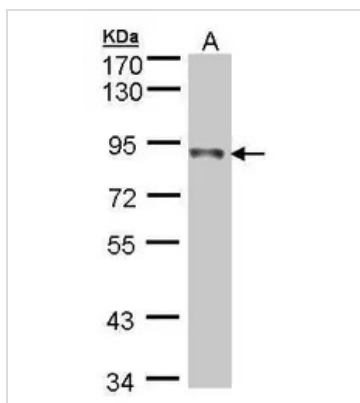
Sample (50 µg of whole cell lysate)

A: Mouse brain

7.5% SDS PAGE

GTx105270 diluted at 1:10000

The HRP-conjugated anti-rabbit IgG antibody (GTx213110-01) was used to detect the primary antibody.


GTx105270 WB Image

Sample (30 µg of whole cell lysate)

A: HepG2 (GTx27900)

7.5% SDS PAGE

GTx105270 diluted at 1:1500

The HRP-conjugated anti-rabbit IgG antibody (GTx213110-01) was used to detect the primary antibody.



For full product information, images and publications, please visit our [website](http://www.genetex.com).