

## c-Abl antibody [ABL-148]

**Cat. No. GTX10528**

|                     |                                   |
|---------------------|-----------------------------------|
| <b>Host</b>         | Mouse                             |
| <b>Clonality</b>    | Monoclonal                        |
| <b>Isotype</b>      | IgG2a                             |
| <b>Applications</b> | WB, ICC/IF, FCM, IP               |
| <b>Reactivity</b>   | Human, Mouse, Rat, Bovine, Monkey |

**Package**  
100 µl

## Applications

**Application Note**

\*Optimal dilutions/concentrations should be determined by the researcher.

| Suggested dilution | Recommended dilution |
|--------------------|----------------------|
| WB                 | 1:2,000              |
| ICC/IF             | Assay dependent      |
| FCM                | Assay dependent      |
| IP                 | Assay dependent      |

Not tested in other applications.

**Calculated MW** 123 kDa. ([Note](#))

## Properties

|                     |  |
|---------------------|--|
| <b>Form</b>         | Liquid   |
| <b>Buffer</b>       | Ascites  |
| <b>Preservative</b> | No preservatives   |
| <b>Storage</b>      | Store as concentrated solution. Centrifuge briefly prior to opening vial. For short-term storage (1-2 weeks), store at 4°C. For long-term storage, aliquot and store at -20°C or below. Avoid multiple freeze-thaw cycles. |
| <b>Immunogen</b>    | recombinant c-Abl, SH2 domain.   |
| <b>Purification</b> | Unpurified   |
| <b>Conjugation</b>  | Unconjugated   |

**Note**

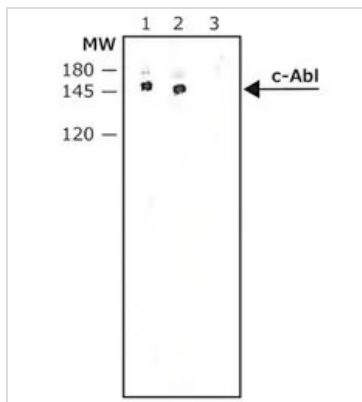
For laboratory research use only. Not for any clinical, therapeutic, or diagnostic use in humans or animals. Not for animal or human consumption.

Purchasers shall not, and agree not to enable third parties to, analyze, copy, reverse engineer or otherwise attempt to determine the structure or sequence of the product.



For full product information, images and publications, please visit our [website](#).

## DATA IMAGES

**GTX10528 WB Image**

WB analysis of G361 whole cell lysate using GTX10528 c-Abl antibody [ABL-148].

Lane 1 : 1:4000 dilution

Lane 2 : 1:112000 dilution

Lane 3 : Negative control



For full product information, images and publications, please visit our [website](#).