

c-Abl antibody [ABL-148]

Cat. No. GTX10528

Host	Mouse
Clonality	Monoclonal
Isotype	IgG2a
Applications	WB, ICC/IF, FCM, IP
Reactivity	Human, Mouse, Rat, Bovine, Monkey

Package
100 µl

Applications

Application Note

*Optimal dilutions/concentrations should be determined by the researcher.

Suggested dilution	Recommended dilution
WB	1:2,000
ICC/IF	Assay dependent
FCM	Assay dependent
IP	Assay dependent

Not tested in other applications.

Calculated MW 123 kDa. ([Note](#))

Properties

Form	Liquid
Buffer	Ascites
Preservative	No preservatives
Storage	Store as concentrated solution. Centrifuge briefly prior to opening vial. For short-term storage (1-2 weeks), store at 4°C. For long-term storage, aliquot and store at -20°C or below. Avoid multiple freeze-thaw cycles.
Immunogen	recombinant c-Abl, SH2 domain.
Purification	Unpurified
Conjugation	Unconjugated

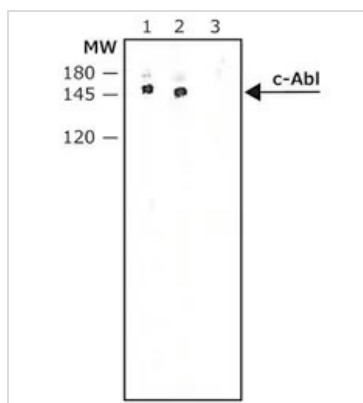
Note

For laboratory research use only. Not for any clinical, therapeutic, or diagnostic use in humans or animals. Not for animal or human consumption.

Purchasers shall not, and agree not to enable third parties to, analyze, copy, reverse engineer or otherwise attempt to determine the structure or sequence of the product.



For full product information, images and publications, please visit our [website](#).

DATA IMAGES

GTX10528 WB Image

WB analysis of G361 whole cell lysate using GTX10528 c-Abl antibody [ABL-148].

Lane 1 : 1:4000 dilution

Lane 2 : 11:2000 dilution

Lane 3 : Negative control



For full product information, images and publications, please visit our [website](https://www.genetex.com).