

## Annexin VII antibody

**Cat. No. GTX105298**

<b>Host</b>	Rabbit
<b>Clonality</b>	Polyclonal
<b>Isotype</b>	IgG
<b>Applications</b>	WB, ICC/IF, IHC-P
<b>Reactivity</b>	Human

**Package**  
100 µl, 25 µl

## Applications

**Application Note**

\*Optimal dilutions/concentrations should be determined by the researcher.

Suggested dilution	Recommended dilution
WB	1:500-1:3000
ICC/IF	1:100-1:1000
IHC-P	1:100-1:1000

Not tested in other applications.

**Calculated MW** 53 kDa. ( [Note](#) )

## Properties

<b>Form</b>	Liquid
<b>Buffer</b>	0.1M Tris, 0.1M Glycine, 10% Glycerol
<b>Preservative</b>	0.01% Thimerosal
<b>Storage</b>	Store as concentrated solution. Centrifuge briefly prior to opening vial. For short-term storage (1-2 weeks), store at 4°C. For long-term storage, aliquot and store at -20°C or below. Avoid multiple freeze-thaw cycles.
<b>Concentration</b>	0.28 mg/ml (Please refer to the vial label for the specific concentration.)
<b>Immunogen</b>	Recombinant protein encompassing a sequence within the center region of human Annexin VII. The exact sequence is proprietary.
<b>Purification</b>	Purified by antigen-affinity chromatography.
<b>Conjugation</b>	Unconjugated

**Note**

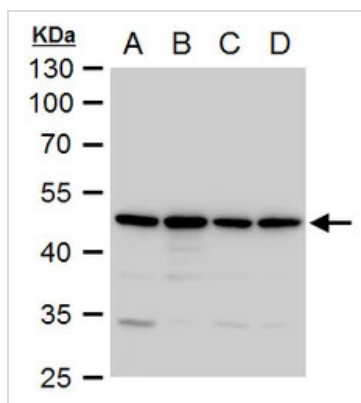
For laboratory research use only. Not for any clinical, therapeutic, or diagnostic use in humans or animals. Not for animal or human consumption.

Purchasers shall not, and agree not to enable third parties to, analyze, copy, reverse engineer or otherwise attempt to determine the structure or sequence of the product.



For full product information, images and publications, please visit our [website](#).

## DATA IMAGES



### GTx105298 WB Image

Annexin VII antibody detects Annexin VII protein by western blot analysis.

A. 30  $\mu$ g 293T whole cell extract

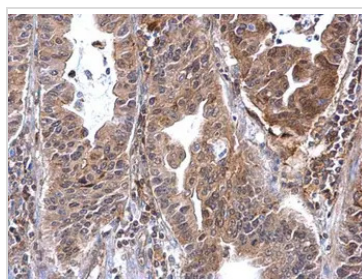
B. 30  $\mu$ g A431 whole cell extract

C. 30  $\mu$ g HeLa whole cell extract

D. 30  $\mu$ g HepG2 whole cell extract

10 % SDS-PAGE

Annexin VII antibody (GTx105298) dilution: 1:1000



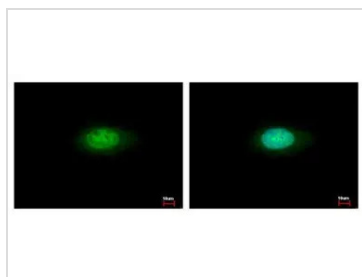
### GTx105298 IHC-P Image

Annexin VII antibody detects Annexin VII protein at cytosol on human gastric carcinoma by immunohistochemical analysis.

Sample: Paraffin-embedded human gastric carcinoma.

Annexin VII antibody (GTx105298) dilution: 1:500.

Antigen Retrieval: Trilogy™ (EDTA based, pH 8.0) buffer, 15min



### GTx105298 ICC/IF Image

Annexin VII antibody detects ANXA7 protein at cytoplasm and nucleus by immunofluorescent analysis.

Sample: HeLa cells were fixed in ice-cold MeOH for 5 min.

Green: ANXA7 protein stained by Annexin VII antibody (GTx105298) diluted at 1:500.

Blue: Hoechst 33343 staining.



For full product information, images and publications, please visit our [website](https://www.genetex.com).