

## C1 inhibitor antibody [N1C3]

**Cat. No. GTX105316**

<b>Host</b>	Rabbit
<b>Clonality</b>	Polyclonal
<b>Isotype</b>	IgG
<b>Applications</b>	WB, IHC-P, IHC
<b>Reactivity</b>	Human, Mouse, Rat, Bovine

References ( 3 )

Package

100 µl, 25 µl

## Applications

**Application Note**

\*Optimal dilutions/concentrations should be determined by the researcher.

Suggested dilution	Recommended dilution
WB	1:500-1:10000
IHC-P	1:100-1:1000
IHC	Assay dependent

Not tested in other applications.

**Calculated MW** 55 kDa. ( [Note](#) )

## Properties

<b>Form</b>	Liquid
<b>Buffer</b>	PBS, 20% Glycerol
<b>Preservative</b>	0.025% ProClin 300
<b>Storage</b>	Store as concentrated solution. Centrifuge briefly prior to opening vial. For short-term storage (1-2 weeks), store at 4°C. For long-term storage, aliquot and store at -20°C or below. Avoid multiple freeze-thaw cycles.
<b>Concentration</b>	0.5 mg/ml (Please refer to the vial label for the specific concentration.)
<b>Immunogen</b>	Recombinant protein encompassing a sequence within the center region of human C1 inhibitor. The exact sequence is proprietary.
<b>Purification</b>	Purified by antigen-affinity chromatography.
<b>Conjugation</b>	Unconjugated

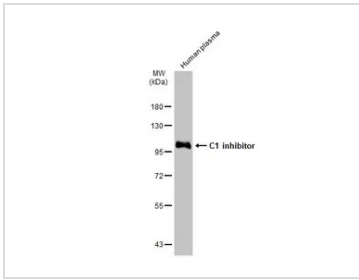
**Note**

For laboratory research use only. Not for any clinical, therapeutic, or diagnostic use in humans or animals. Not for animal or human consumption.

Purchasers shall not, and agree not to enable third parties to, analyze, copy, reverse engineer or otherwise attempt to determine the structure or sequence of the product.

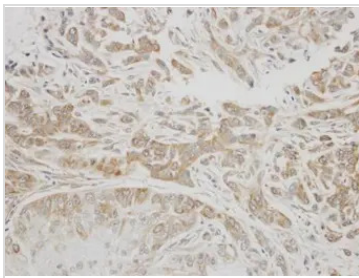
For full product information, images and publications, please visit our [website](#).

DATA IMAGES



**GTX105316 WB Image**

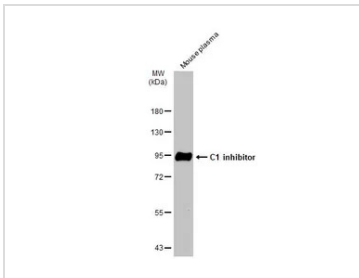
Human plasma (30 µg) was separated by 7.5% SDS-PAGE, and the membrane was blotted with C1 inhibitor antibody [N1C3] (GTX105316) diluted at 1:15000. The HRP-conjugated anti-rabbit IgG antibody (GTX213110-01) was used to detect the primary antibody.



**GTX105316 IHC-P Image**

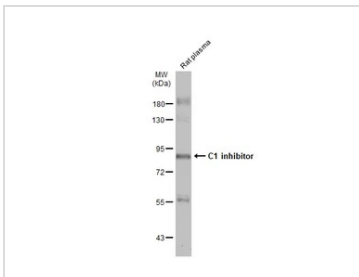
Immunohistochemical analysis of paraffin-embedded A549 xenograft, using C1 inhibitor(GTX105316) antibody at 1:300 dilution.

Antigen Retrieval: Trilogy™ (EDTA based, pH 8.0) buffer, 15min



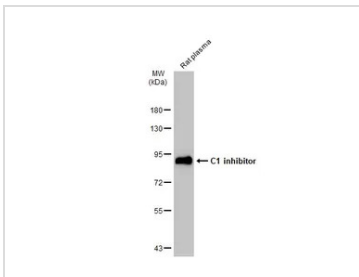
**GTX105316 WB Image**

Mouse plasma (50 µg) was separated by 7.5% SDS-PAGE, and the membrane was blotted with C1 inhibitor antibody [N1C3] (GTX105316) diluted at 1:3000. The HRP-conjugated anti-rabbit IgG antibody (GTX213110-01) was used to detect the primary antibody.



**GTX105316 WB Image**

Rat plasma (50 µg) was separated by 7.5% SDS-PAGE, and the membrane was blotted with C1 inhibitor antibody [N1C3] (GTX105316) diluted at 1:1000. The HRP-conjugated anti-rabbit IgG antibody (GTX213110-01) was used to detect the primary antibody.



**GTX105316 WB Image**

Rat plasma (50 µg) was separated by 7.5% SDS-PAGE, and the membrane was blotted with C1 inhibitor antibody [N1C3] (GTX105316) diluted at 1:3000. The HRP-conjugated anti-rabbit IgG antibody (GTX213110-01) was used to detect the primary antibody.



For full product information, images and publications, please visit our [website](#).