

PSMC5 antibody

Cat. No. GTX105347

Host	Rabbit
Clonality	Polyclonal
Isotype	IgG
Applications	WB, ICC/IF, IHC-P
Reactivity	Human, Mouse, Rat

Package
100 µl, 25 µl

Applications

Application Note

*Optimal dilutions/concentrations should be determined by the researcher.

Suggested dilution	Recommended dilution
WB	1:500-1:3000
ICC/IF	1:100-1:1000
IHC-P	1:100-1:1000

Not tested in other applications.

Calculated MW 46 kDa. ([Note](#))

Properties

Form	Liquid
Buffer	0.1M Tris, 0.1M Glycine, 10% Glycerol
Preservative	0.01% Thimerosal
Storage	Store as concentrated solution. Centrifuge briefly prior to opening vial. For short-term storage (1-2 weeks), store at 4°C. For long-term storage, aliquot and store at -20°C or below. Avoid multiple freeze-thaw cycles.
Concentration	1 mg/ml (Please refer to the vial label for the specific concentration.)
Immunogen	Recombinant protein encompassing a sequence within the center region of human PSMC5. The exact sequence is proprietary.
Purification	Purified by antigen-affinity chromatography.
Conjugation	Unconjugated

Note

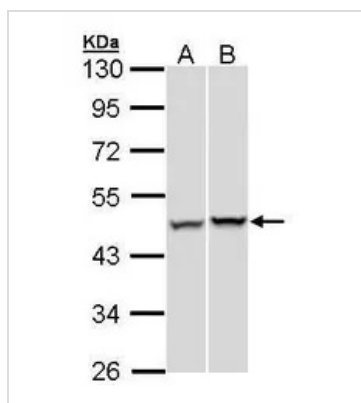
For laboratory research use only. Not for any clinical, therapeutic, or diagnostic use in humans or animals. Not for animal or human consumption.

Purchasers shall not, and agree not to enable third parties to, analyze, copy, reverse engineer or otherwise attempt to determine the structure or sequence of the product.



For full product information, images and publications, please visit our [website](#).

DATA IMAGES



GTX105347 WB Image

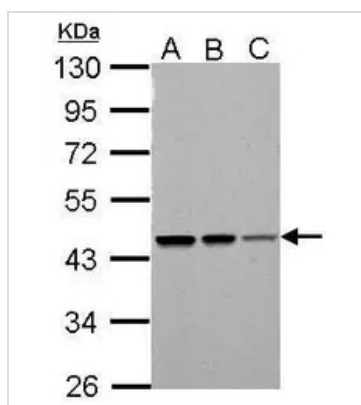
Sample (30 ug of whole cell lysate)

A: A431 (GTX27909)

B: Hep G2 (GTX27900)

10% SDS PAGE

GTX105347 diluted at 1:1000



GTX105347 WB Image

PSMC5 antibody detects PSMC5 protein by Western blot analysis.

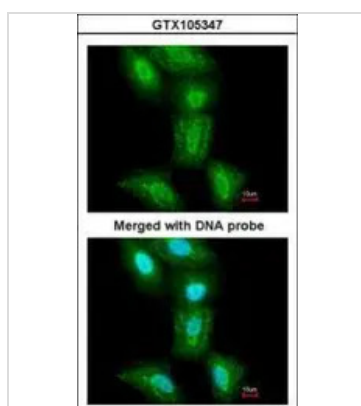
A. 30 μ g Neuro2A whole cell lysate/extract

B. 30 μ g GL261 whole cell lysate/extract

C. 30 μ g C8D30 whole cell lysate/extract

10 % SDS-PAGE

PSMC5 antibody (GTX105347) dilution: 1:1000



GTX105347 ICC/IF Image

Immunofluorescence analysis of paraformaldehyde-fixed A549, using PSMC5(GTX105347) antibody at 1:200 dilution.



For full product information, images and publications, please visit our [website](https://www.genetex.com).