

## BRCC45 antibody

Cat. No. GTX105364

Host	Rabbit
Clonality	Polyclonal
Isotype	IgG
Applications	WB, ICC/IF, IP
Reactivity	Human, Mouse, Rat

References ( 2 )

Package

100 µl, 25 µl

## Applications

## Application Note

\*Optimal dilutions/concentrations should be determined by the researcher.

Suggested dilution	Recommended dilution
WB	1:500-1:3000
ICC/IF	1:100-1:1000
IP	1:100-1:500

Not tested in other applications.

Calculated MW 44 kDa. ( [Note](#) )

## Properties

Form	Liquid
Buffer	0.1M Tris, 0.1M Glycine, 10% Glycerol
Preservative	0.01% Thimerosal
Storage	Store as concentrated solution. Centrifuge briefly prior to opening vial. For short-term storage (1-2 weeks), store at 4°C. For long-term storage, aliquot and store at -20°C or below. Avoid multiple freeze-thaw cycles.
Concentration	1 mg/ml (Please refer to the vial label for the specific concentration.)
Immunogen	Recombinant protein encompassing a sequence within the center region of human BRCC45. The exact sequence is proprietary.
Purification	Purified by antigen-affinity chromatography.
Conjugation	Unconjugated

## Note

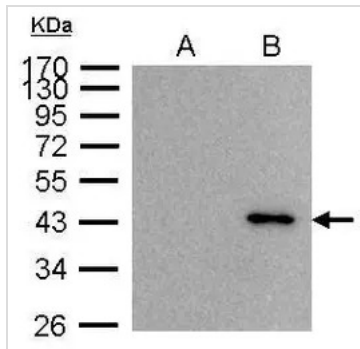
For laboratory research use only. Not for any clinical, therapeutic, or diagnostic use in humans or animals. Not for animal or human consumption.

Purchasers shall not, and agree not to enable third parties to, analyze, copy, reverse engineer or otherwise attempt to determine the structure or sequence of the product.



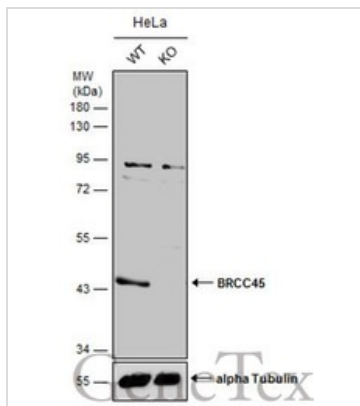
For full product information, images and publications, please visit our [website](#).

DATA IMAGES



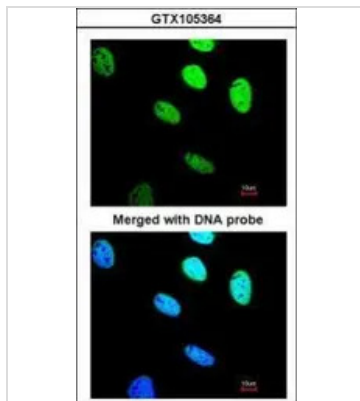
**GTX105364 IP Image**

BRE antibody immunoprecipitates BRE protein in IP experiments. IP Sample: 1000 µg 293T whole cell lysate/extract A. Control with 2.5 µg of preimmune rabbit IgG B. Immunoprecipitation of BRE protein by 2.5 µg of BRE antibody (GTX105364) 10% SDS-PAGE The immunoprecipitated BRE protein was detected by BRE antibody (GTX105364) diluted at 1:1000. EasyBlot anti-rabbit IgG (GTX221666-01) was used as a secondary reagent.



**GTX105364 WB Image**

Wild-type (WT) and BRCC45 knockout (KO) HeLa cell extracts (30 µg) were separated by 10% SDS-PAGE, and the membrane was blotted with BRCC45 antibody (GTX105364) diluted at 1:500. The HRP-conjugated anti-rabbit IgG antibody (GTX213110-01) was used to detect the primary antibody, and the signal was developed with Trident ECL plus-Enhanced.



**GTX105364 ICC/IF Image**

Immunofluorescence analysis of paraformaldehyde-fixed HeLa, using BRE(GTX105364) antibody at 1:200 dilution.



For full product information, images and publications, please visit our [website](https://www.genetex.com).