

Optineurin antibody

Cat. No. GTX105447

Host	Rabbit
Clonality	Polyclonal
Isotype	IgG
Application	WB, ICC/IF, IHC-P, IP
Reactivity	Human

Reference (1)

Package

100 µl, 25 µl

APPLICATION

Application Note

*Optimal dilutions/concentrations should be determined by the researcher.

Suggested dilution	Recommended dilution
WB	1:500-1:3000
ICC/IF	1:100-1:1000
IHC-P	1:100-1:1000
IP	1:100-1:500

Not tested in other applications.

Calculated MW 66 kDa. ([Note](#))

PROPERTIES

Form	Liquid
Buffer	0.1M Tris, 0.1M Glycine, 10% Glycerol
Preservative	0.01% Thimerosal
Storage	Store as concentrated solution. Centrifuge briefly prior to opening vial. For short-term storage (1-2 weeks), store at 4°C. For long-term storage, aliquot and store at -20°C or below. Avoid multiple freeze-thaw cycles.
Concentration	1 mg/ml (Please refer to the vial label for the specific concentration.)
Immunogen	Recombinant protein encompassing a sequence within the center region of human Optineurin. The exact sequence is proprietary.
Purification	Purified by antigen-affinity chromatography.
Conjugation	Unconjugated

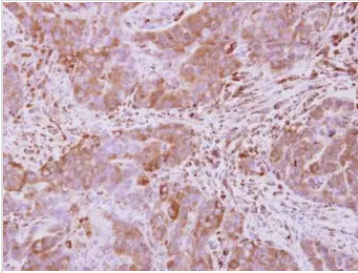


For full product information, images and publications, please visit our [website](#).

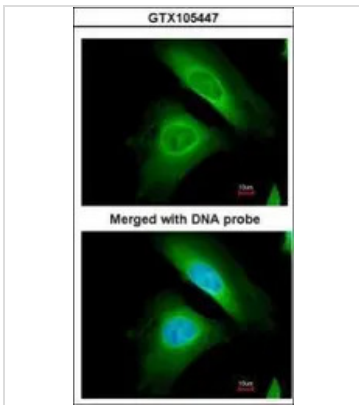
For laboratory research use only. Not for any clinical, therapeutic, or diagnostic use in humans or animals. Not for animal or human consumption.

Note

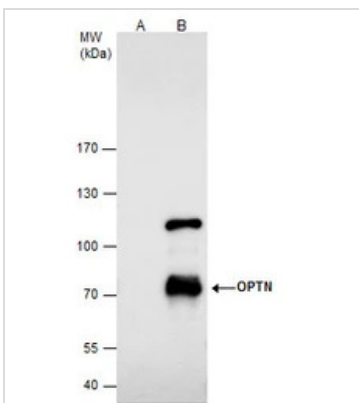
Purchasers shall not, and agree not to enable third parties to, analyze, copy, reverse engineer or otherwise attempt to determine the structure or sequence of the product.

DATA IMAGES

GTX105447 IHC-P Image

Immunohistochemical analysis of paraffin-embedded human colon carcinoma, using Optineurin(GTX105447) antibody at 1:500 dilution.
Antigen Retrieval: Citrate buffer, pH 6.0, 15 min


GTX105447 ICC/IF Image

Immunofluorescence analysis of paraformaldehyde-fixed HeLa, using Optineurin(GTX105447) antibody at 1:200 dilution.


GTX105447 IP Image

Optineurin antibody immunoprecipitates Optineurin protein in IP experiments.

IP samples: HepG2 whole cell extract

A. Control with 4 µg of preimmune Rabbit IgG

B. Immunoprecipitation of Optineurin protein by 4 µg Optineurin antibody (GTX105447)

7.5 % SDS-PAGE

The immunoprecipitated Optineurin protein was detected by Optineurin antibody (GTX105447) diluted at 1:500.

[EasyBlot anti-rabbit IgG (GTX221666-01) was used as a secondary reagent]



For full product information, images and publications, please visit our [website](https://www.genetex.com).