

ROCK1 antibody

Cat. No. GTX10549

Host	Rabbit
Clonality	Polyclonal
Isotype	IgG
Applications	WB
Reactivity	Human, Mouse, Dog

Package

50 µl

Applications

Application Note

*Optimal dilutions/concentrations should be determined by the researcher.

Suggested dilution	Recommended dilution
WB	Assay dependent
Not tested in other applications.	

Calculated MW 158 kDa. ([Note](#))

Properties

Form	Liquid
Buffer	PBS pH7.3 (without Mg ²⁺ and Ca ²⁺), 50% Glycerol, 1.0mg/ml BSA (IgG, Protease free)
Preservative	0.05% Sodium azide
Storage	Store as concentrated solution. Centrifuge briefly prior to opening vial. For short-term storage (1-2 weeks), store at 4°C. For long-term storage, aliquot and store at -20°C or below. Avoid multiple freeze-thaw cycles.
Concentration	Batch dependent (Please refer to the vial label for the specific concentration.)
Immunogen	Synthetic peptide (Human).
Purification	Immunogen affinity purified Purified from rabbit serum by sequential epitope-specific chromatography. The antibody has been negatively preadsorbed using a spanning peptide corresponding to the cleavage-site to remove antibody that is reactive with non-cleavage-site specific ROCK1. T
Conjugation	Unconjugated

Note

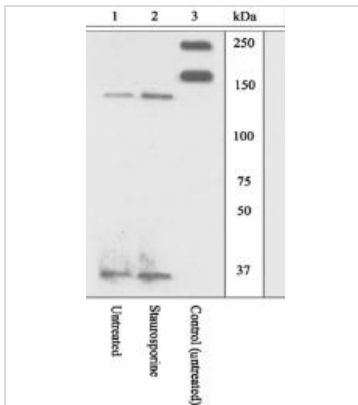
For laboratory research use only. Not for any clinical, therapeutic, or diagnostic use in humans or animals. Not for animal or human consumption.

Purchasers shall not, and agree not to enable third parties to, analyze, copy, reverse engineer or otherwise attempt to determine the structure or sequence of the product.



For full product information, images and publications, please visit our [website](#).

DATA IMAGES



GTX10549 WB Image

Lysates prepared from MDCK cells left untreated (1, 3) or treated with staurosporine (2) were resolved by SDS-PAGE on a 10% polyacrylamide gel and transferred to PVDF. Membranes were blocked with a 5% BSA-TBST buffer for one hour at room temperature, and incubated with ROCK1 (GTX10549) cleavage-site specific antibody (1, 2) or a ROCK1 pan antibody (3) in a 3% BSA-TBST buffer for two hours at room temperature. After washing, membranes were incubated with goat F(ab')₂ anti-rabbit IgG HRP conjugate and bands were detected. The data show that ROCK1 [1113/1114] CSSA detected the 130 kDa cleaved form of ROCK but not the full length. This antibody did not detect the 130 kDa cleaved form of ROCK upon inhibition of caspase activity with the pan caspase inhibitor Ac-VAD-CHO (data not shown).



For full product information, images and publications, please visit our [website](https://www.genetex.com).