

# ZIC2 antibody

**Cat. No. GTX10550**

<b>Host</b>	Rabbit
<b>Clonality</b>	Polyclonal
<b>Isotype</b>	IgG
<b>Applications</b>	WB, ELISA
<b>Reactivity</b>	Mouse, Rat

**Package**  
50 µg

## Applications

### Application Note

\*Optimal dilutions/concentrations should be determined by the researcher.

Suggested dilution	Recommended dilution
WB	1:500-1:2000
ELISA	1:10000-1:50000

Not tested in other applications.

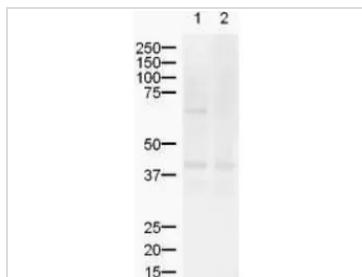
## Properties

<b>Form</b>	Liquid
<b>Buffer</b>	20mM Potassium Phosphate, 150mM NaCl
<b>Preservative</b>	0.01% Sodium azide
<b>Storage</b>	Store as concentrated solution. Centrifuge briefly prior to opening vial. For short-term storage (1-2 weeks), store at 4°C. For long-term storage, aliquot and store at -20°C or below. Avoid multiple freeze-thaw cycles.
<b>Concentration</b>	1 mg/ml (Please refer to the vial label for the specific concentration.)
<b>Immunogen</b>	Synthetic peptide corresponding to an internal region near amino acids 180-210 of Mouse ZIC-2.
<b>Purification</b>	Purified by antigen-affinity chromatography. From serum
<b>Conjugation</b>	Unconjugated
<b>Note</b>	For laboratory research use only. Not for any clinical, therapeutic, or diagnostic use in humans or animals. Not for animal or human consumption.  Purchasers shall not, and agree not to enable third parties to, analyze, copy, reverse engineer or otherwise attempt to determine the structure or sequence of the product.



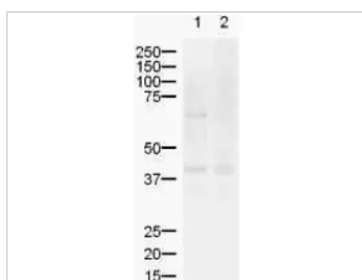
For full product information, images and publications, please visit our [website](#).

## DATA IMAGES



### GTx10550 WB Image

Western blot using GeneTex's Affinity Purified anti-ZIC2 antibody shows detection of a band ~55 kDa (arrowhead) corresponding to ZIC2 in lysates from (lane 1) mouse brain and (lane 2) rat brain. Approximately 20 ug of each lysate was run on a SDS-PAGE and transferred onto nitrocellulose followed by reaction with a 1:500 dilution of anti-ZIC2 antibody. Signal was detected using standard techniques. The upper band in the mouse brain lysate represents Zic2.



### GTx10550 WB Image

WB analysis of various samples using GTx10550 ZIC2 antibody.

Lane 1 : Mouse brain tissue lysate

Lane 2 : Rat brain tissue lysate

Loading : 20 µg

Dilution : 1:500



For full product information, images and publications, please visit our [website](https://www.genetex.com).