

NAGLU antibody

Cat. No. GTX105504

Host	Rabbit
Clonality	Polyclonal
Isotype	IgG
Applications	ICC/IF, IHC-P, IHC-Fr
Reactivity	Human, Mouse, Rat

Package
100 µl, 25 µl

Applications

Application Note

*Optimal dilutions/concentrations should be determined by the researcher.

Suggested dilution	Recommended dilution
ICC/IF	1:100-1:1000
IHC-P	1:100-1:1000
IHC-Fr	1:100-1:1000

Not tested in other applications.

Properties

Form	Liquid
Buffer	PBS, 20% Glycerol
Preservative	0.025% ProClin 300
Storage	Store as concentrated solution. Centrifuge briefly prior to opening vial. For short-term storage (1-2 weeks), store at 4°C. For long-term storage, aliquot and store at -20°C or below. Avoid multiple freeze-thaw cycles.
Concentration	0.69 mg/ml (Please refer to the vial label for the specific concentration.)
Immunogen	Recombinant protein encompassing a sequence within the center region of human NAGLU. The exact sequence is proprietary.
Purification	Purified by antigen-affinity chromatography.
Conjugation	Unconjugated

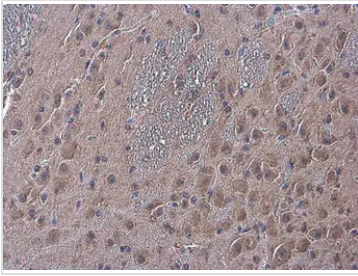
Note

For laboratory research use only. Not for any clinical, therapeutic, or diagnostic use in humans or animals. Not for animal or human consumption.

Purchasers shall not, and agree not to enable third parties to, analyze, copy, reverse engineer or otherwise attempt to determine the structure or sequence of the product.



For full product information, images and publications, please visit our [website](#).

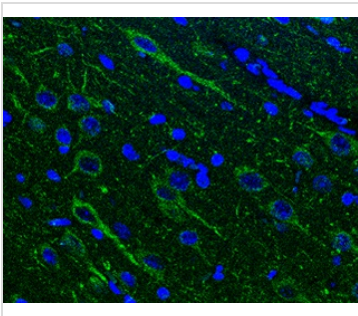
DATA IMAGES

GTX105504 IHC-P Image

NAGLU antibody detects NAGLU protein at cytoplasm in mouse brain by immunohistochemical analysis.

Sample: Paraffin-embedded mouse brain.

NAGLU antibody (GTX105504) diluted at 1:250.

Antigen Retrieval: Citrate buffer, pH 6.0, 15 min


GTX105504 IHC-P Image

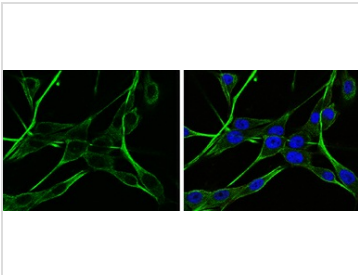
NAGLU antibody detects NAGLU protein at cytoplasm in rat brain by immunohistochemical analysis.

Sample: Paraffin-embedded rat brain.

Green: NAGLU antibody (GTX105504) diluted at 1:200. The signal was developed using goat anti-rabbit IgG antibody (Dylight488) (GTX213110-04).

Blue: Nuclear staining with Hoechst 33342.

Antigen Retrieval: Citrate buffer, pH 6.0, 15 min

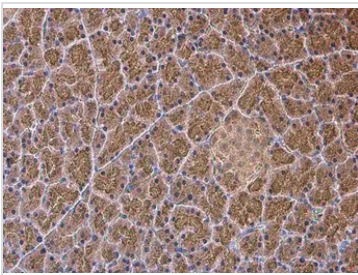

GTX105504 ICC/IF Image

NAGLU antibody detects NAGLU protein at cytoplasm by immunofluorescent analysis.

Sample: U-87 MG cells were fixed in 4% paraformaldehyde at RT for 15 min.

Green: NAGLU protein stained by NAGLU antibody (GTX105504) diluted at 1:250.

Blue: Hoechst 33342 staining.

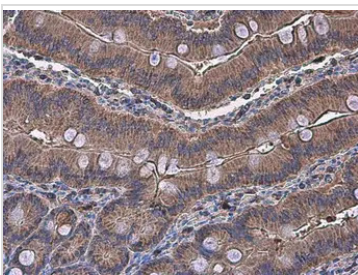

GTX105504 IHC-P Image

NAGLU antibody detects NAGLU protein at cytoplasm in rat pancreas by immunohistochemical analysis.

Sample: Paraffin-embedded rat pancreas.

NAGLU antibody (GTX105504) diluted at 1:500.

Antigen Retrieval: Citrate buffer, pH 6.0, 15 min


GTX105504 IHC-P Image

NAGLU antibody detects NAGLU protein at cytoplasm in rat duodenum by immunohistochemical analysis.

Sample: Paraffin-embedded rat duodenum.

NAGLU antibody (GTX105504) diluted at 1:250.

Antigen Retrieval: Citrate buffer, pH 6.0, 15 min



For full product information, images and publications, please visit our [website](https://www.genetex.com).