

RSK2 antibody

Cat. No. GTX105543

Host	Rabbit
Clonality	Polyclonal
Isotype	IgG
Application	WB, IHC-P
Reactivity	Human, Mouse, Rat

Package
100 µl, 25 µl

APPLICATION

Application Note

*Optimal dilutions/concentrations should be determined by the researcher.

Suggested dilution	Recommended dilution
WB	1:500-1:10000
IHC-P	1:100-1:1000

Not tested in other applications.

Calculated MW 84 kDa. ([Note](#))

PROPERTIES

Form	Liquid
Buffer	PBS, 20% Glycerol
Preservative	0.01% Thimerosal
Storage	Store as concentrated solution. Centrifuge briefly prior to opening vial. For short-term storage (1-2 weeks), store at 4°C. For long-term storage, aliquot and store at -20°C or below. Avoid multiple freeze-thaw cycles.
Concentration	1.03 mg/ml (Please refer to the vial label for the specific concentration.)
Immunogen	Recombinant protein encompassing a sequence within the center region of human RSK2. The exact sequence is proprietary.
Purification	Purified by antigen-affinity chromatography.
Conjugation	Unconjugated

Note

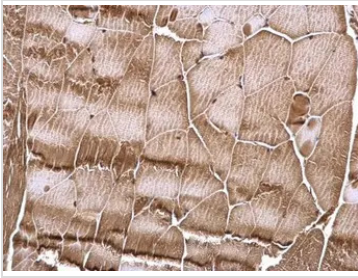
For laboratory research use only. Not for any clinical, therapeutic, or diagnostic use in humans or animals. Not for animal or human consumption.

Purchasers shall not, and agree not to enable third parties to, analyze, copy, reverse engineer or otherwise attempt to determine the structure or sequence of the product.



For full product information, images and publications, please visit our [website](#).

DATA IMAGES



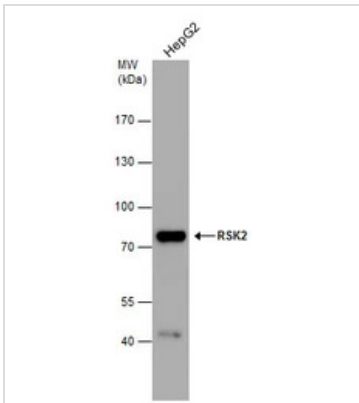
GTK105543 IHC-P Image

RSK2 antibody detects RSK2 protein at cytosol and nucleus on mouse muscle by immunohistochemical analysis.

Sample: Paraffin-embedded mouse muscle.

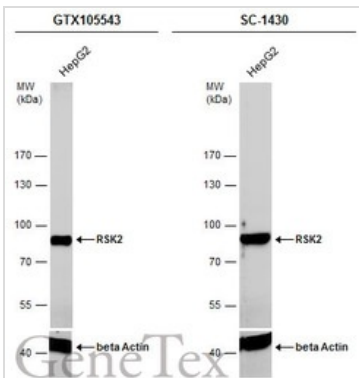
RSK2 antibody (GTK105543) dilution: 1:500.

Antigen Retrieval: Trilogy™ (EDTA based, pH 8.0) buffer, 15min



GTK105543 WB Image

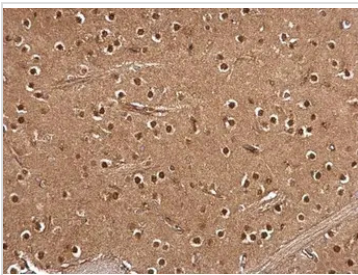
RSK2 antibody detects RSK2 protein by western blot analysis. Whole cell extracts (30 µg) was separated by 7.5% SDS-PAGE, and the membrane was blotted with RSK2 antibody (GTK105543) diluted by 1:1000.



GTK105543 WB Image

Whole cell extract (30 µg) was separated by 7.5% SDS-PAGE, and the membranes were blotted with RSK2 antibody (GTK105543) diluted at 1:4000 and competitor's antibody (SC-1430) diluted by 1:1000. The HRP-conjugated anti-rabbit IgG antibody (GTK213110-01) was used to detect the primary antibody.

*The competitor is not affiliated with GeneTex and does not endorse this product.



GTK105543 IHC-P Image

RSK2 antibody detects RSK2 protein at cytosol and nucleus on rat middle brain by immunohistochemical analysis.

Sample: Paraffin-embedded rat middle brain.

RSK2 antibody (GTK105543) dilution: 1:500.

Antigen Retrieval: Trilogy™ (EDTA based, pH 8.0) buffer, 15min



For full product information, images and publications, please visit our [website](https://www.genetex.com).