

PKA 2 beta antibody

Cat. No. GTX105558

Host	Rabbit
Clonality	Polyclonal
Isotype	IgG
Applications	WB, ICC/IF, IHC-P, IHC-Fr
Reactivity	Human, Mouse, Rat

Package
100 µl, 25 µl

Applications

Application Note

*Optimal dilutions/concentrations should be determined by the researcher.

Suggested dilution	Recommended dilution
WB	1:500-1:3000
ICC/IF	1:100-1:1000
IHC-P	1:100-1:1000
IHC-Fr	1:100-1:1000

Not tested in other applications.

Calculated MW 46 kDa. ([Note](#))

Properties

Form	Liquid
Buffer	0.1M Tris, 0.1M Glycine, 10% Glycerol
Preservative	0.01% Thimerosal
Storage	Store as concentrated solution. Centrifuge briefly prior to opening vial. For short-term storage (1-2 weeks), store at 4°C. For long-term storage, aliquot and store at -20°C or below. Avoid multiple freeze-thaw cycles.
Concentration	0.67 mg/ml (Please refer to the vial label for the specific concentration.)
Immunogen	Recombinant protein encompassing a sequence within the center region of human PKA 2 beta. The exact sequence is proprietary.
Purification	Purified by antigen-affinity chromatography.
Conjugation	Unconjugated



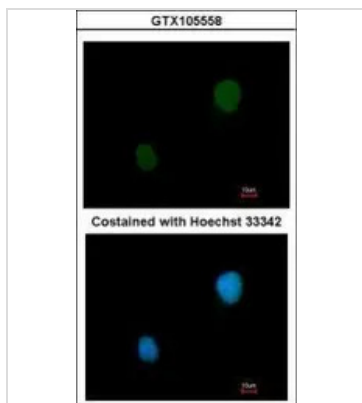
For full product information, images and publications, please visit our [website](#).

For laboratory research use only. Not for any clinical, therapeutic, or diagnostic use in humans or animals. Not for animal or human consumption.

Note

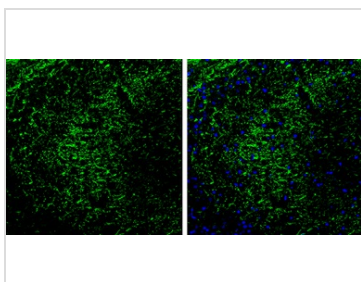
Purchasers shall not, and agree not to enable third parties to, analyze, copy, reverse engineer or otherwise attempt to determine the structure or sequence of the product.

DATA IMAGES



GTx105558 ICC/IF Image

Immunofluorescence analysis of methanol-fixed HeLa, using PKA 2 beta(GTx105558) antibody at 1:200 dilution.



GTx105558 IHC-Fr Image

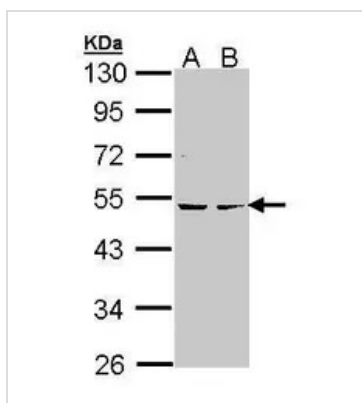
PKA 2 beta antibody detects PKA 2 beta protein by immunohistochemical analysis.

Samples: Frozen Sectioned adult mouse hippocampus.

Green: PKA 2 beta protein stained by PKA 2 beta antibody (GTx105558) diluted at 1:250.

Blue: Fluoroshield with DAPI (GTx30920).

Antigen Retrieval: Citrate buffer, pH 6.0, 10 min



GTx105558 WB Image

Sample (30 ug of whole cell lysate)

A: HeLa

B: Hep G2 (GTx27900)

10% SDS PAGE

GTx105558 diluted at 1:1000



For full product information, images and publications, please visit our [website](https://www.genetex.com).