

CMPK1 antibody [N1C3]

Cat. No. GTX105566

Host	Rabbit
Clonality	Polyclonal
Isotype	IgG
Applications	WB, ICC/IF
Reactivity	Human, Mouse

References (1)

Package

100 µl, 25 µl

Applications

Application Note

*Optimal dilutions/concentrations should be determined by the researcher.

Suggested dilution	Recommended dilution
WB	1:500-1:3000
ICC/IF	1:100-1:1000

Not tested in other applications.

Calculated MW 22 kDa. ([Note](#))

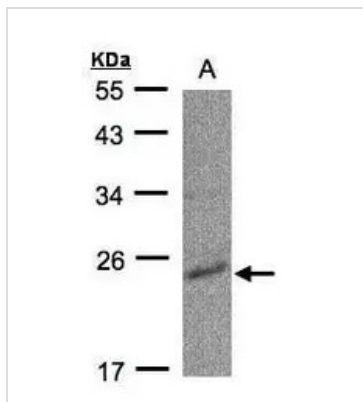
Properties

Form	Liquid
Buffer	0.1M Tris, 0.1M Glycine, 10% Glycerol
Preservative	0.01% Thimerosal
Storage	Store as concentrated solution. Centrifuge briefly prior to opening vial. For short-term storage (1-2 weeks), store at 4°C. For long-term storage, aliquot and store at -20°C or below. Avoid multiple freeze-thaw cycles.
Concentration	1 mg/ml (Please refer to the vial label for the specific concentration.)
Immunogen	Recombinant protein encompassing a sequence within the center region of human CMPK1. The exact sequence is proprietary.
Purification	Purified by antigen-affinity chromatography.
Conjugation	Unconjugated
Note	For laboratory research use only. Not for any clinical, therapeutic, or diagnostic use in humans or animals. Not for animal or human consumption. Purchasers shall not, and agree not to enable third parties to, analyze, copy, reverse engineer or otherwise attempt to determine the structure or sequence of the product.



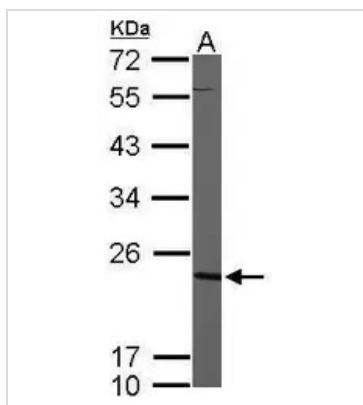
For full product information, images and publications, please visit our [website](#).

DATA IMAGES



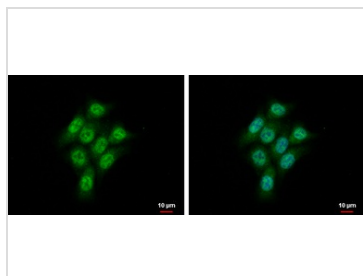
GTX105566 WB Image

Sample(30 ug whole cell lysate)
 A:Raji (GTX27908)
 12% SDS PAGE
 GTX105566 diluted at 1:500



GTX105566 WB Image

Sample (50 ug of whole cell lysate)
 A: Mouse brain
 12% SDS PAGE
 GTX105566 diluted at 1:1000



GTX105566 ICC/IF Image

CMPK1 antibody [N1C3] detects CMPK1 protein at cytoplasm and nucleus by immunofluorescent analysis.
 Sample: HCT 116 cells were fixed in 4% paraformaldehyde at RT for 15 min.
 Green: CMPK1 protein stained by CMPK1 antibody [N1C3] (GTX105566) diluted at 1:500.
 Blue: Hoechst 33342 staining.
 Scale bar = 10 μ m.



For full product information, images and publications, please visit our [website](#).