

# Casein Kinase 1 alpha 1L antibody

**Cat. No. GTX105584**

<b>Host</b>	Rabbit
<b>Clonality</b>	Polyclonal
<b>Isotype</b>	IgG
<b>Applications</b>	WB, ICC/IF, IHC-P, IHC-Wm
<b>Reactivity</b>	Human, Rat, Zebrafish

**Package**  
100 µl, 25 µl

## Applications

### Application Note

\*Optimal dilutions/concentrations should be determined by the researcher.

Suggested dilution	Recommended dilution
WB	1:500-1:3000
ICC/IF	1:100-1:1000
IHC-P	1:100-1:1000
IHC-Wm	Assay dependent

Not tested in other applications.

**Calculated MW** 39 kDa. ( [Note](#) )

## Properties

<b>Form</b>	Liquid
<b>Buffer</b>	PBS, 1% BSA, 20% Glycerol
<b>Preservative</b>	0.01% Thimerosal
<b>Storage</b>	Store as concentrated solution. Centrifuge briefly prior to opening vial. For short-term storage (1-2 weeks), store at 4°C. For long-term storage, aliquot and store at -20°C or below. Avoid multiple freeze-thaw cycles.
<b>Concentration</b>	0.53 mg/ml (Please refer to the vial label for the specific concentration.)
<b>Immunogen</b>	Recombinant protein encompassing a sequence within the center region of human Casein Kinase 1 alpha 1L. The exact sequence is proprietary.
<b>Purification</b>	Purified by antigen-affinity chromatography.
<b>Conjugation</b>	Unconjugated



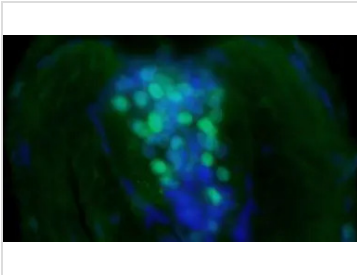
For full product information, images and publications, please visit our [website](#).

For laboratory research use only. Not for any clinical, therapeutic, or diagnostic use in humans or animals. Not for animal or human consumption.

## Note

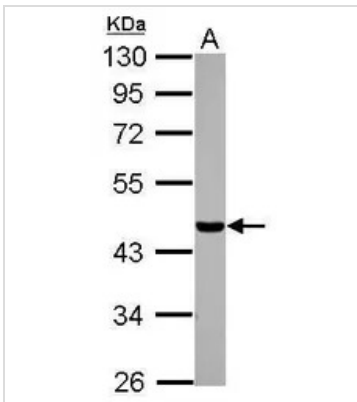
Purchasers shall not, and agree not to enable third parties to, analyze, copy, reverse engineer or otherwise attempt to determine the structure or sequence of the product.

## DATA IMAGES



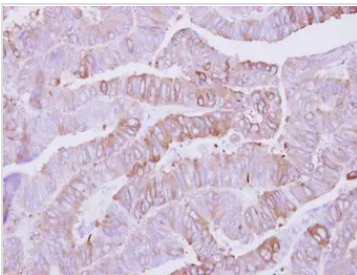
### GTX105584 IHC-Wm Image

Immunofluorescent image of a cross-section of a zebrafish embryo using Casein Kinase 1 alpha 1L antibody (GTX105584) at a 1:200 dilution. Casein Kinase 1 alpha 1L is localized in neurons in the spinal cord. Casein Kinase 1 alpha 1L (Green)(This image was provided courtesy of the Schilling Lab at UC, Irvine.)



### GTX105584 WB Image

Sample (30 ug of whole cell lysate)  
A: A549  
10% SDS PAGE  
GTX105584 diluted at 1:500



### GTX105584 IHC-P Image

Immunohistochemical analysis of paraffin-embedded human colon carcinoma, using Casein Kinase 1 alpha 1L(GTX105584) antibody at 1:500 dilution.  
Antigen Retrieval: Trilogy™ (EDTA based, pH 8.0) buffer, 15min



For full product information, images and publications, please visit our [website](https://www.genetex.com).