

LIMK1 antibody

Cat. No. GTX10561

Host	Rabbit
Clonality	Polyclonal
Isotype	IgG
Applications	WB, ICC/IF, ELISA
Reactivity	Mouse

References (1)

Package

50 µg

Applications

Application Note

*Optimal dilutions/concentrations should be determined by the researcher.

Suggested dilution	Recommended dilution
WB	1:500-1:2000
ICC/IF	Assay dependent
ELISA	1:8000-1:36000

Not tested in other applications.

Calculated MW 73 kDa. ([Note](#))

Properties

Form	Liquid
Buffer	20mM Potassium Phosphate, 150mM NaCl
Preservative	0.01% Sodium azide
Storage	Store as concentrated solution. Centrifuge briefly prior to opening vial. For short-term storage (1-2 weeks), store at 4°C. For long-term storage, aliquot and store at -20°C or below. Avoid multiple freeze-thaw cycles.
Concentration	1 mg/ml (Please refer to the vial label for the specific concentration.)
Immunogen	Synthetic peptide corresponding to the C-terminal region near aa 620-647 of human LIM kinase protein.
Purification	Purified by antigen-affinity chromatography. From serum
Conjugation	Unconjugated

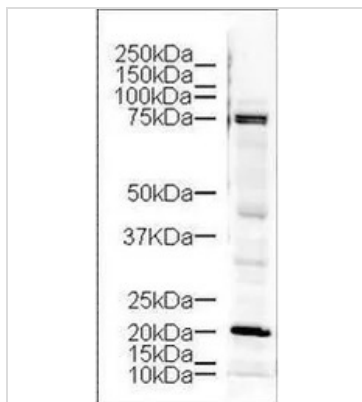
Note

For laboratory research use only. Not for any clinical, therapeutic, or diagnostic use in humans or animals. Not for animal or human consumption.

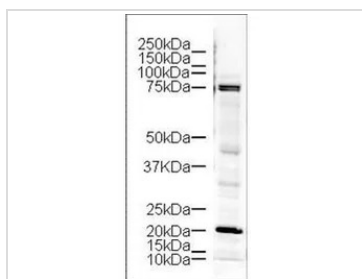
Purchasers shall not, and agree not to enable third parties to, analyze, copy, reverse engineer or otherwise attempt to determine the structure or sequence of the product.

For full product information, images and publications, please visit our [website](#).

DATA IMAGES

**GTX10561 WB Image**

Western blot using GeneTex Affinity Purified anti-LIM Kinase antibody (GTX10561) shows detection of a 73 kDa band corresponding to LIM kinase in lysates from mouse brain. Approximately 18 ug of lysate was run on a SDS-PAGE and transferred onto nitrocellulose followed by reaction with a 1:500 dilution of anti-LIM kinase antibody. The doublet band at ~75 kDa may represent phosphorylated and non-phosphorylated forms of the protein. The identity of the strong lower molecular weight band at approximately 20 kDa is unknown. Signal was detected using standard techniques.

**GTX10561 WB Image**

WB analysis of mouse brain tissue lysate using GTX10561 LIMK1 antibody.

Loading : 18 μ g

Dilution : 1:500



For full product information, images and publications, please visit our [website](#).