

Cytokeratin 18 antibody [N2C2], Internal

Cat. No. GTX105624

Host	Rabbit
Clonality	Polyclonal
Isotype	IgG
Application	WB, ICC/IF, IHC-P, IP
Reactivity	Human, Mouse, Dog

Reference (5)
 Package
 100 µl, 25 µl

APPLICATION

Application Note

*Optimal dilutions/concentrations should be determined by the researcher.

Suggested dilution	Recommended dilution
WB	1:500-1:3000
ICC/IF	1:100-1:1000
IHC-P	1:100-1:1000
IP	Assay dependent

Not tested in other applications.

Calculated MW 48 kDa. ([Note](#))

PROPERTIES

Form	Liquid
Buffer	0.1M Tris, 0.1M Glycine, 10% Glycerol
Preservative	0.01% Thimerosal
Storage	Store as concentrated solution. Centrifuge briefly prior to opening vial. For short-term storage (1-2 weeks), store at 4°C. For long-term storage, aliquot and store at -20°C or below. Avoid multiple freeze-thaw cycles.
Concentration	0.54 mg/ml (Please refer to the vial label for the specific concentration.)
Immunogen	Recombinant protein encompassing a sequence within the center region of human Cytokeratin 18. The exact sequence is proprietary.
Purification	Purified by antigen-affinity chromatography.
Conjugation	Unconjugated



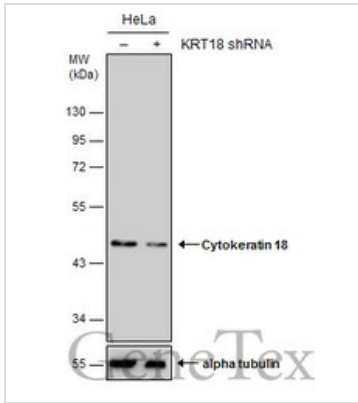
For full product information, images and publications, please visit our [website](#).

For laboratory research use only. Not for any clinical, therapeutic, or diagnostic use in humans or animals. Not for animal or human consumption.

Note

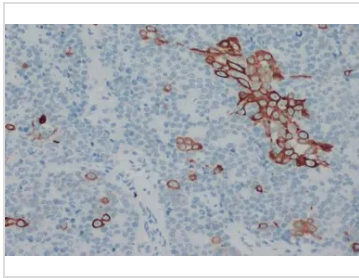
Purchasers shall not, and agree not to enable third parties to, analyze, copy, reverse engineer or otherwise attempt to determine the structure or sequence of the product.

DATA IMAGES



GTx105624 WB Image

Non-transfected (–) and transfected (+) HeLa whole cell extracts (15 µg) were separated by 10% SDS-PAGE, and the membrane was blotted with Cytokeratin 18 antibody [N2C2], Internal (GTx105624) diluted at 1:2000.



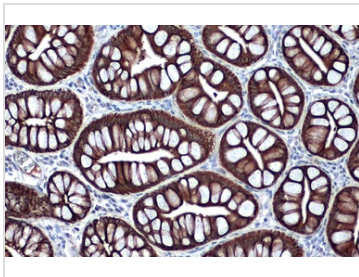
GTx105624 IHC-P Image

Cytokeratin 18 antibody detects Cytokeratin 18 protein at cytoskeleton by immunohistochemical analysis.

Sample: Paraffin-embedded dog malignant carcinoma.

Cytokeratin 18 stained by Cytokeratin 18 antibody (GTx105624) diluted at 1:500.

Antigen Retrieval: Citrate buffer, pH 6.0, 15 min



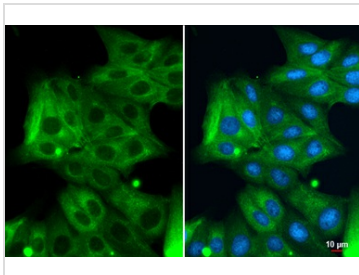
GTx105624 IHC-P Image

Cytokeratin 18 antibody detects Cytokeratin 18 protein at cell membrane and cytoplasm by immunohistochemical analysis.

Sample: Paraffin-embedded dog colon.

Cytokeratin 18 stained by Cytokeratin 18 antibody (GTx105624) diluted at 1:500.

Antigen Retrieval: Citrate buffer, pH 6.0, 15 min



GTx105624 ICC/IF Image

Cytokeratin 18 antibody detects Cytokeratin 18 protein at cytoplasm by immunofluorescent analysis.

Sample: MDCK cells were fixed in 4% paraformaldehyde at RT for 15 min.

Green: Cytokeratin 18 stained by Cytokeratin 18 antibody (GTx105624) diluted at 1:500.



For full product information, images and publications, please visit our [website](https://www.genetex.com).