

CREB (phospho Ser129/Ser133) antibody

Cat. No. GTX10564

Host	Rabbit
Clonality	Polyclonal
Isotype	IgG
Applications	WB, ICC/IF, ChIP assay
Reactivity	Human, Mouse

References (1)

Package

50 µl

Applications

Application Note

*Optimal dilutions/concentrations should be determined by the researcher.

Suggested dilution	Recommended dilution
WB	1:200-1:2000
ICC/IF	1:100-1:500
ChIP assay	10µl

Not tested in other applications.

Calculated MW 37 kDa. ([Note](#))

Properties

Form	Liquid
Buffer	PBS, 0.1% BSA, 50% Glycerol
Preservative	0.05% Sodium azide
Storage	Store as concentrated solution. Centrifuge briefly prior to opening vial. For short-term storage (1-2 weeks), store at 4°C. For long-term storage, aliquot and store at -20°C or below. Avoid multiple freeze-thaw cycles.
Concentration	Batch dependent (Please refer to the vial label for the specific concentration.)
Immunogen	Phosphopeptide containing amino acid sequence RRP[pS]YRK, conjugated to KLH.
Purification	Purified by antigen-affinity chromatography
Conjugation	Unconjugated

Note

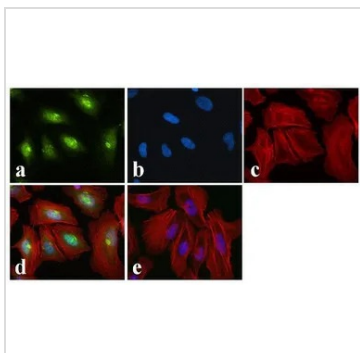
For laboratory research use only. Not for any clinical, therapeutic, or diagnostic use in humans or animals. Not for animal or human consumption.

Purchasers shall not, and agree not to enable third parties to, analyze, copy, reverse engineer or otherwise attempt to determine the structure or sequence of the product.



For full product information, images and publications, please visit our [website](#).

DATA IMAGES



GTXT10564 ICC/IF Image

ICC/IF analysis of HeLa cells using GTXT10564 CREB (phospho Ser129/Ser133) antibody. Panel e is a no primary antibody control.

Green : Primary antibody

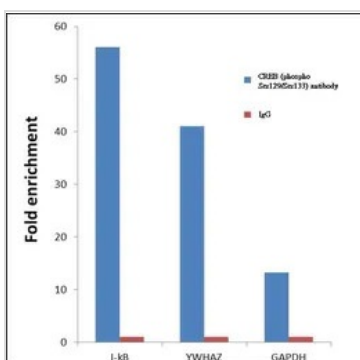
Blue : Nuclei

Red : Actin

Fixation : 4% paraformaldehyde

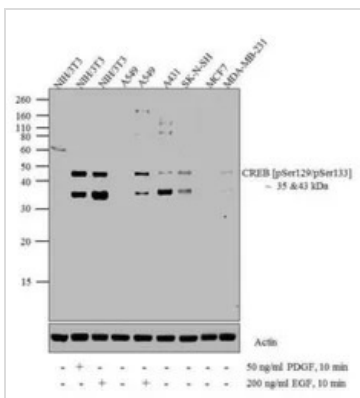
Permeabilization : 0.25% Triton X-100 for 10 minutes

Dilution : 1:400 for 30 minutes at room temperature



GTXT10564 ChIP assay Image

ChIP analysis of 2 million HeLa cells treated with 50ng/ml of TNF alpha for one hour using GTXT10564 CREB (phospho Ser129/Ser133) antibody. Normal Rabbit IgG was used as a negative IP control. The precipitated DNA was detected by PCR with primer set targeting to the promoter of I-kB, YWHAZ gene as positive control target and the inactive GAPDH used as negative control target.



GTXT10564 WB Image

WB analysis of 20 µg of NIH/3T3 untreated (lane 1), treated for 10 minutes with 50 ng/ml of PDGF (lane 2), treated for 10 minutes with 200 ng/ml of EGF (lane 3), A549 untreated (lane 4), treated for 10 minutes with 200 ng/ml of EGF (lane 5), A431 (lane 6), SK-N-SH (lane 7), MCF7 (lane 8) and MDA-MB-231 (lane 9) cell lysate using GTXT10564 CREB (phospho Ser129/Ser133) antibody.

Dilution : 1:1000



For full product information, images and publications, please visit our [website](https://www.genetex.com).