

## MSL3L1 antibody

Cat. No. GTX105652

<b>Host</b>	Rabbit
<b>Clonality</b>	Polyclonal
<b>Isotype</b>	IgG
<b>Applications</b>	WB, ICC/IF, IP
<b>Reactivity</b>	Human, Mouse

**Package**  
100 µl, 25 µl

## Applications

## Application Note

\*Optimal dilutions/concentrations should be determined by the researcher.

Suggested dilution	Recommended dilution
WB	1:500-1:3000
ICC/IF	1:100-1:1000
IP	1:100-1:500

Not tested in other applications.

**Calculated MW** 60 kDa. ( [Note](#) )

## Properties

<b>Form</b>	Liquid
<b>Buffer</b>	PBS, 1% BSA, 20% Glycerol
<b>Preservative</b>	0.01% Thimerosal
<b>Storage</b>	Store as concentrated solution. Centrifuge briefly prior to opening vial. For short-term storage (1-2 weeks), store at 4°C. For long-term storage, aliquot and store at -20°C or below. Avoid multiple freeze-thaw cycles.
<b>Concentration</b>	1 mg/ml (Please refer to the vial label for the specific concentration.)
<b>Immunogen</b>	Recombinant protein encompassing a sequence within the center region of human MSL3L1. The exact sequence is proprietary.
<b>Purification</b>	Purified by antigen-affinity chromatography.
<b>Conjugation</b>	Unconjugated

## Note

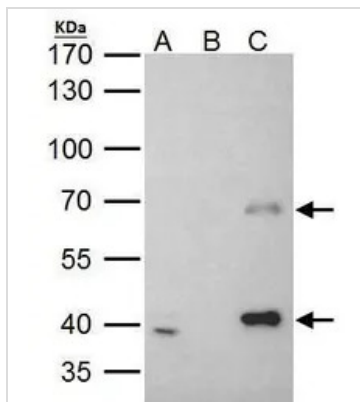
For laboratory research use only. Not for any clinical, therapeutic, or diagnostic use in humans or animals. Not for animal or human consumption.

Purchasers shall not, and agree not to enable third parties to, analyze, copy, reverse engineer or otherwise attempt to determine the structure or sequence of the product.



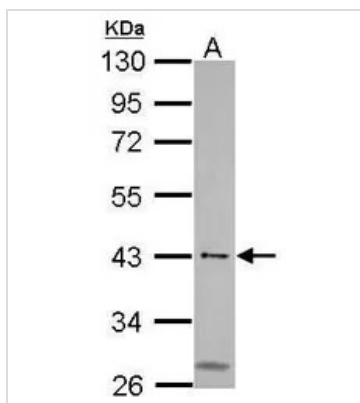
For full product information, images and publications, please visit our [website](#).

## DATA IMAGES



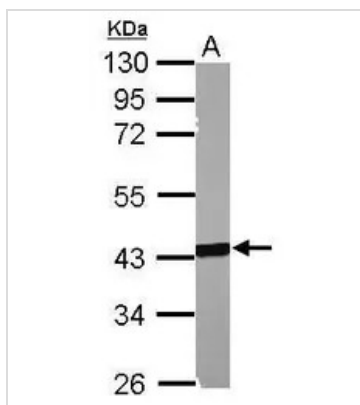
### GTX105652 IP Image

MSL3L1 antibody immunoprecipitates MSL3L1 protein in IP experiments. IP Sample: 293T whole cell lysate/extract A. 40 µg 293T whole cell lysate/extract B. Control with 2 µg of preimmune rabbit IgG C. Immunoprecipitation of MSL3L1 protein by 2 µg of MSL3L1 antibody (GTX105652) 7.5% SDS-PAGE The immunoprecipitated MSL3L1 protein was detected by MSL3L1 antibody (GTX105652) diluted at 1:1000. EasyBlot anti-rabbit IgG (GTX221666-01) was used as a secondary reagent.



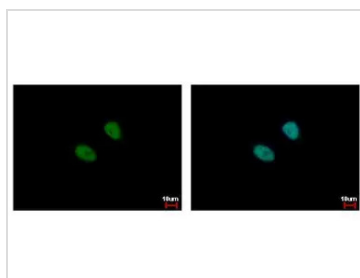
### GTX105652 WB Image

Sample (30 ug of whole cell lysate)  
A: 293T  
10% SDS PAGE  
GTX105652 diluted at 1:500



### GTX105652 WB Image

Sample (50 ug of whole cell lysate)  
A: mouse muscle  
10% SDS PAGE  
GTX105652 diluted at 1:1000



### GTX105652 ICC/IF Image

MSL3L1 antibody detects MSL3L1 protein at nucleus by immunofluorescent analysis.  
Sample: HeLa cells were fixed in 4% paraformaldehyde at RT for 15 min.  
Green: MSL3L1 protein stained by MSL3L1 antibody (GTX105652) diluted at 1:500.  
Blue: Hoechst 33342 staining.



For full product information, images and publications, please visit our [website](https://www.genetex.com).