

## PFKL antibody [C1C3]

Cat. No. GTX105697

Host	Rabbit
Clonality	Polyclonal
Isotype	IgG
Applications	WB, ICC/IF, IHC-P
Reactivity	Human, Mouse

References ( 2 )

Package

100 µl, 25 µl

## Applications

## Application Note

\*Optimal dilutions/concentrations should be determined by the researcher.

Suggested dilution	Recommended dilution
WB	1:500-1:3000
ICC/IF	1:100-1:1000
IHC-P	1:100-1:1000

Not tested in other applications.

Calculated MW	85 kDa. ( <a href="#">Note</a> )
Product Note	Based on sequence homology, this antibody may cross react with PFKP or PFKM protein.

## Properties

Form	Liquid
Buffer	PBS, 20% Glycerol
Preservative	0.025% ProClin 300
Storage	Store as concentrated solution. Centrifuge briefly prior to opening vial. For short-term storage (1-2 weeks), store at 4°C. For long-term storage, aliquot and store at -20°C or below. Avoid multiple freeze-thaw cycles.
Concentration	1.23 mg/ml (Please refer to the vial label for the specific concentration.)
Immunogen	Recombinant protein encompassing a sequence within the center region of human PFKL. The exact sequence is proprietary.
Purification	Purified by antigen-affinity chromatography.
Conjugation	Unconjugated

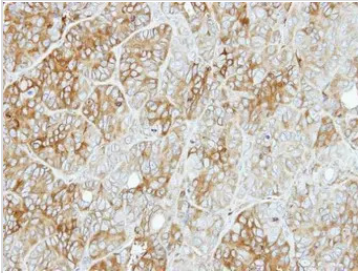


For full product information, images and publications, please visit our [website](#).

For laboratory research use only. Not for any clinical, therapeutic, or diagnostic use in humans or animals. Not for animal or human consumption.

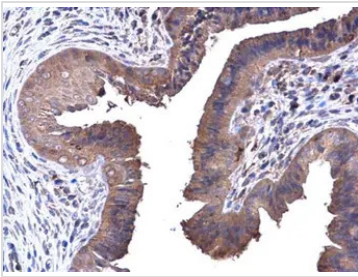
**Note**

Purchasers shall not, and agree not to enable third parties to, analyze, copy, reverse engineer or otherwise attempt to determine the structure or sequence of the product.

**DATA IMAGES**

**GTx105697 IHC-P Image**

Immunohistochemical analysis of paraffin-embedded SW480 xenograft, using PFKL(GTX105697) antibody at 1:500 dilution.

Antigen Retrieval: Citrate buffer, pH 6.0, 15 min

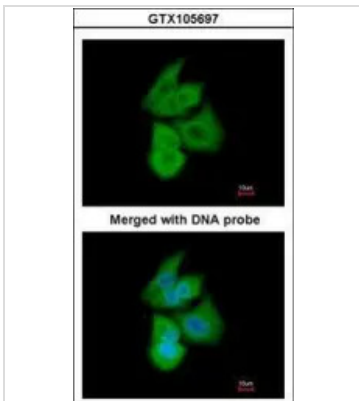

**GTx105697 IHC-P Image**

PFKL antibody [C1C3] detects PFKL protein at cytoplasm in mouse cervix by immunohistochemical analysis.

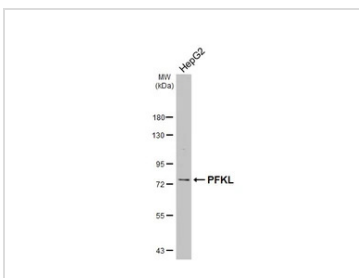
Sample: Paraffin-embedded mouse cervix.

PFKL antibody [C1C3] (GTx105697) diluted at 1:500.

Antigen Retrieval: Citrate buffer, pH 6.0, 15 min


**GTx105697 ICC/IF Image**

Immunofluorescence analysis of paraformaldehyde-fixed A549, using PFKL(GTX105697) antibody at 1:200 dilution.


**GTx105697 WB Image**

Whole cell extract (30 µg) was separated by 7.5% SDS-PAGE, and the membrane was blotted with PFKL antibody [C1C3] (GTx105697) diluted at 1:1000. The HRP-conjugated anti-rabbit IgG antibody (GTx213110-01) was used to detect the primary antibody.



For full product information, images and publications, please visit our [website](https://www.genetex.com).