

PFKL antibody [C1C3]

Cat. No. GTX105697

Host	Rabbit
Clonality	Polyclonal
Isotype	IgG
Applications	WB, ICC/IF, IHC-P
Reactivity	Human, Mouse

[References \(2 \)](#)

Package

100 µl, 25 µl

Applications

Application Note

*Optimal dilutions/concentrations should be determined by the researcher.

Suggested dilution	Recommended dilution
WB	1:500-1:3000
ICC/IF	1:100-1:1000
IHC-P	1:100-1:1000

Not tested in other applications.

Calculated MW 85 kDa. ([Note](#))

Product Note Based on sequence homology, this antibody may cross react with PFKP or PFKM protein.

Properties

Form	Liquid
Buffer	PBS, 20% Glycerol
Preservative	0.025% ProClin 300
Storage	Store as concentrated solution. Centrifuge briefly prior to opening vial. For short-term storage (1-2 weeks), store at 4°C. For long-term storage, aliquot and store at -20°C or below. Avoid multiple freeze-thaw cycles.
Concentration	1.23 mg/ml (Please refer to the vial label for the specific concentration.)
Immunogen	Recombinant protein encompassing a sequence within the center region of human PFKL. The exact sequence is proprietary.
Purification	Purified by antigen-affinity chromatography.
Conjugation	Unconjugated

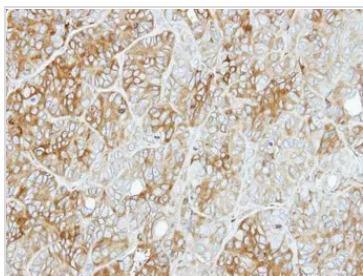


For full product information, images and publications, please visit our [website](#).

For laboratory research use only. Not for any clinical, therapeutic, or diagnostic use in humans or animals. Not for animal or human consumption.

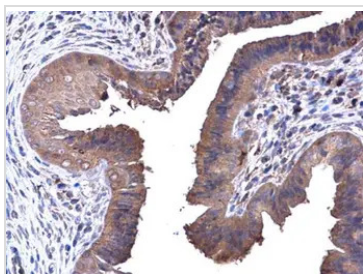
Note

Purchasers shall not, and agree not to enable third parties to, analyze, copy, reverse engineer or otherwise attempt to determine the structure or sequence of the product.

DATA IMAGES

GTx105697 IHC-P Image

Immunohistochemical analysis of paraffin-embedded SW480 xenograft, using PFKL(GTx105697) antibody at 1:500 dilution.

Antigen Retrieval: Citrate buffer, pH 6.0, 15 min

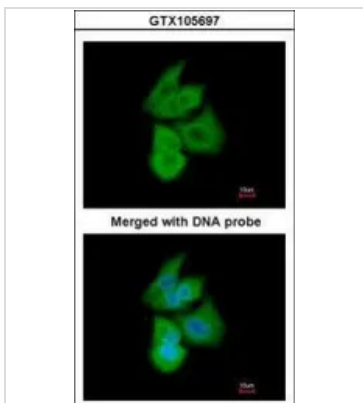

GTx105697 IHC-P Image

PFKL antibody [C1C3] detects PFKL protein at cytoplasm in mouse cervix by immunohistochemical analysis.

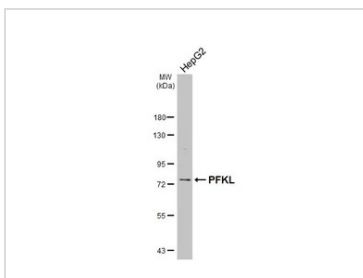
Sample: Paraffin-embedded mouse cervix.

PFKL antibody [C1C3] (GTx105697) diluted at 1:500.

Antigen Retrieval: Citrate buffer, pH 6.0, 15 min


GTx105697 ICC/IF Image

Immunofluorescence analysis of paraformaldehyde-fixed A549, using PFKL(GTx105697) antibody at 1:200 dilution.


GTx105697 WB Image

Whole cell extract (30 µg) was separated by 7.5% SDS-PAGE, and the membrane was blotted with PFKL antibody [C1C3] (GTx105697) diluted at 1:1000. The HRP-conjugated anti-rabbit IgG antibody (GTx213110-01) was used to detect the primary antibody.



For full product information, images and publications, please visit our [website](https://www.genetex.com).