

TDP43 antibody [3H8]

Cat. No. GTX10574

Host	Mouse
Clonality	Monoclonal
Isotype	IgG1
Applications	WB, IHC, IHC (Free Floating)
Reactivity	Human, Mouse, Rat, Bovine, Pig

Package
100 µl

Applications

Application Note

For WB: Use at a dilution of 1:1000-1:5000.

Properties

Form	Liquid
Buffer	PBS
Preservative	0.05% Sodium azide
Storage	Store as concentrated solution. Centrifuge briefly prior to opening vial. Store at 4°C.
Concentration	1 mg/ml (Please refer to the vial label for the specific concentration.)
Immunogen	Full length recombinant human TDP43 expressed in and purified from E. coli
Purification	Purified IgG
Conjugation	Unconjugated

Note

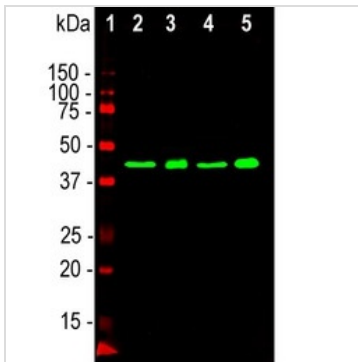
For laboratory research use only. Not for any clinical, therapeutic, or diagnostic use in humans or animals. Not for animal or human consumption.

Purchasers shall not, and agree not to enable third parties to, analyze, copy, reverse engineer or otherwise attempt to determine the structure or sequence of the product.



For full product information, images and publications, please visit our [website](#).

DATA IMAGES



GTX10574 WB Image

WB analysis of various samples using GTX10574 TDP43 antibody [3H8].

Green : Primary antibody

Lane 1 : protein standard (red)

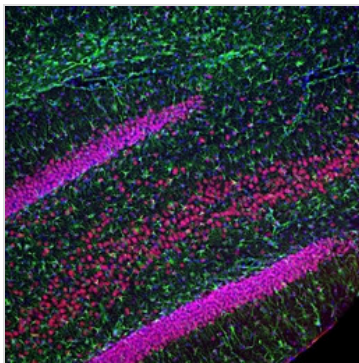
Lane 2 : rat brain tissue lysate

Lane 3 : nuclear extract from rat brain

Lane 4 : mouse brain tissue lysate

Lane 5 : nuclear extract from mouse brain

Dilution : 1:2000



GTX10574 IHC (Free Floating) Image

IHC Free Floating analysis of 4% PFA perfused rat hippocampus section using GTX10574 TDP43 antibody [3H8]. The TDP43 protein is concentrated in the nuclei of hippocampal neurons, while the GFAP antibody stains the intermediate filament network of astroglial cells.

Red : Primary antibody

Green : GFAP

Blue : DAPI

Dilution : 1:2000



For full product information, images and publications, please visit our [website](https://www.genetex.com).