

# NFIB antibody [N1C2]

**Cat. No. GTX105749**

<b>Host</b>	Rabbit
<b>Clonality</b>	Polyclonal
<b>Isotype</b>	IgG
<b>Applications</b>	WB, IHC-P
<b>Reactivity</b>	Human, Mouse

**Package**  
100 µl, 25 µl

## Applications

### Application Note

\*Optimal dilutions/concentrations should be determined by the researcher.

Suggested dilution	Recommended dilution
WB	1:500-1:3000
IHC-P	1:100-1:1000

Not tested in other applications.

**Calculated MW** 47 kDa. ( [Note](#) )

## Properties

<b>Form</b>	Liquid
<b>Buffer</b>	0.1M Tris, 0.1M Glycine, 10% Glycerol
<b>Preservative</b>	0.01% Thimerosal
<b>Storage</b>	Store as concentrated solution. Centrifuge briefly prior to opening vial. For short-term storage (1-2 weeks), store at 4°C. For long-term storage, aliquot and store at -20°C or below. Avoid multiple freeze-thaw cycles.
<b>Concentration</b>	0.57 mg/ml (Please refer to the vial label for the specific concentration.)
<b>Immunogen</b>	Recombinant protein encompassing a sequence within the center region of human NFIB. The exact sequence is proprietary.
<b>Purification</b>	Purified by antigen-affinity chromatography.
<b>Conjugation</b>	Unconjugated

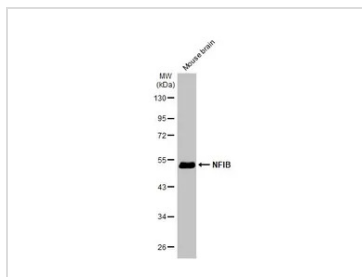
### Note

For laboratory research use only. Not for any clinical, therapeutic, or diagnostic use in humans or animals. Not for animal or human consumption.

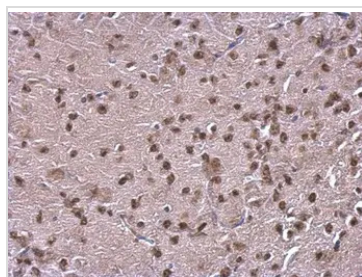
Purchasers shall not, and agree not to enable third parties to, analyze, copy, reverse engineer or otherwise attempt to determine the structure or sequence of the product.



For full product information, images and publications, please visit our [website](#).

**DATA IMAGES**

**GTx105749 WB Image**

Mouse tissue extract (50 µg) was separated by 10% SDS-PAGE, and the membrane was blotted with NFIB antibody [N1C2] (GTx105749) diluted at 1:3000. The HRP-conjugated anti-rabbit IgG antibody (GTx213110-01) was used to detect the primary antibody.

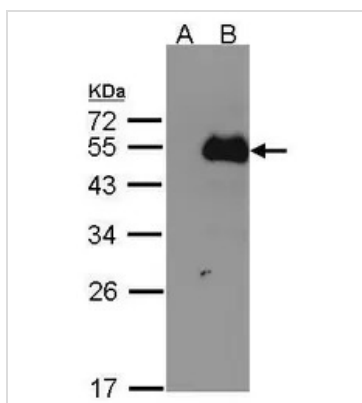

**GTx105749 IHC-P Image**

NFIB antibody [N1C2] detects NFIB protein at nucleus on mouse fore brain by immunohistochemical analysis.

Sample: Paraffin-embedded mouse fore brain.

NFIB antibody [N1C2] (GTx105749) dilution: 1:500.

Antigen Retrieval: Trilogy™ (EDTA based, pH 8.0) buffer, 15min


**GTx105749 WB Image**

Western Blot analysis of NFIB expression in transfected 293T cell line by NFIB polyclonal antibody.

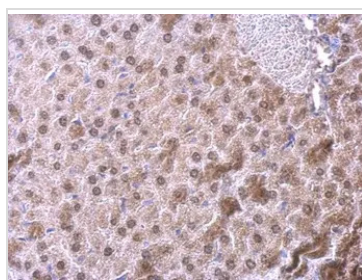
A: Non-transfected lysate.

B: NFIB transfected lysate.

12% SDS PAGE

GTx105749 diluted at 1:500

The HRP-conjugated anti-rabbit IgG antibody (GTx213110-01) was used to detect the primary antibody.


**GTx105749 IHC-P Image**

NFIB antibody [N1C2] detects NFIB protein at nucleus on mouse fore brain by immunohistochemical analysis.

Sample: Paraffin-embedded mouse fore brain.

NFIB antibody [N1C2] (GTx105749) dilution: 1:500.

Antigen Retrieval: Trilogy™ (EDTA based, pH 8.0) buffer, 15min



For full product information, images and publications, please visit our [website](https://www.genetex.com).