

GLUD1 + GLUD2 antibody

Cat. No. GTX105765

Host	Rabbit
Clonality	Polyclonal
Isotype	IgG
Application	WB, ICC/IF, IHC-P, ELISA
Reactivity	Human, Mouse, Rat, Drosophila

Reference (3)

★★★★☆ Review (2)

Package

100 µl, 25 µl

APPLICATION

Application Note

*Optimal dilutions/concentrations should be determined by the researcher.

Suggested dilution	Recommended dilution
WB	1:500-1:3000
ICC/IF	1:100-1:1000
IHC-P	1:100-1:1000
ELISA	Assay dependent

Not tested in other applications.

Calculated MW 61 kDa. ([Note](#))

PROPERTIES

Form	Liquid
Buffer	PBS, 1% BSA, 20% Glycerol
Preservative	0.025% ProClin 300
Storage	Store as concentrated solution. Centrifuge briefly prior to opening vial. For short-term storage (1-2 weeks), store at 4°C. For long-term storage, aliquot and store at -20°C or below. Avoid multiple freeze-thaw cycles.
Concentration	0.07 mg/ml (Please refer to the vial label for the specific concentration.)
Immunogen	Recombinant protein encompassing a sequence within the center region of human Glutamate Dehydrogenase. The exact sequence is proprietary.
Purification	Purified by antigen-affinity chromatography.
Conjugation	Unconjugated

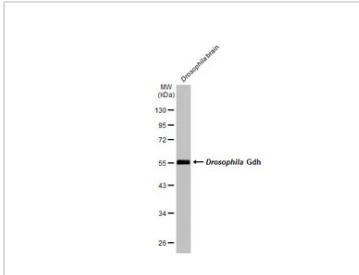


For full product information, images and publications, please visit our [website](#).

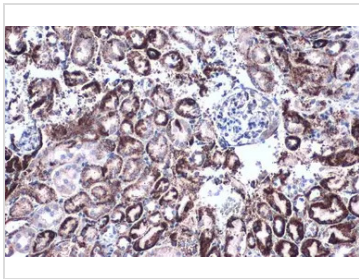
For laboratory research use only. Not for any clinical, therapeutic, or diagnostic use in humans or animals. Not for animal or human consumption.

Note

Purchasers shall not, and agree not to enable third parties to, analyze, copy, reverse engineer or otherwise attempt to determine the structure or sequence of the product.

DATA IMAGES

GTX105765 WB Image

Drosophila tissue extract (50 µg) was separated by 10% SDS-PAGE, and the membrane was blotted with GLUD1 + GLUD2 antibody (GTX105765) diluted at 1:1000. The HRP-conjugated anti-rabbit IgG antibody (GTX213110-01) was used to detect the primary antibody.

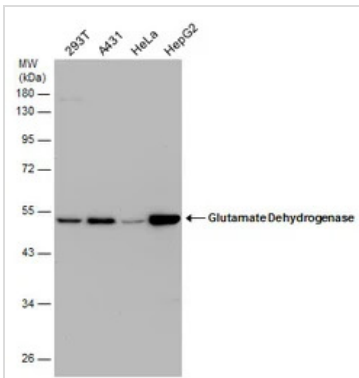

GTX105765 IHC-P Image

GLUD1 + GLUD2 antibody detects Glutamate Dehydrogenase protein at mitochondria by immunohistochemical analysis.

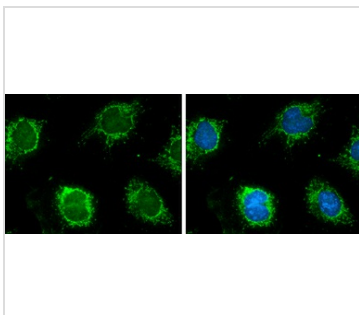
Sample: Paraffin-embedded mouse kidney.

Glutamate Dehydrogenase stained by GLUD1 + GLUD2 antibody (GTX105765) diluted at 1:500.

Antigen Retrieval: Citrate buffer, pH 6.0, 15 min


GTX105765 WB Image

Various whole cell extracts (30 µg) were separated by 10% SDS-PAGE, and the membrane was blotted with GLUD1 + GLUD2 antibody (GTX105765) diluted at 1:1000.


GTX105765 ICC/IF Image

GLUD1+ GLUD2 antibody detects Glutamate Dehydrogenase protein at mitochondria by immunofluorescent analysis.

Sample: HeLa cells were fixed in ice-cold MeOH for 5 min.

Green: Glutamate Dehydrogenase protein stained by GLUD1 + GLUD2 antibody (GTX105765) diluted at 1:500.

Blue: Hoechst 33342 staining.



For full product information, images and publications, please visit our [website](https://www.genetex.com).