

IL13 Receptor alpha 1 antibody

Cat. No. GTX105788

Host	Rabbit
Clonality	Polyclonal
Isotype	IgG
Applications	WB, IHC-P
Reactivity	Human, Mouse, Rat

References (2)

Package

100 µl, 25 µl

Applications

Application Note

*Optimal dilutions/concentrations should be determined by the researcher.

Suggested dilution	Recommended dilution
WB	1:5000-1:20000
IHC-P	1:100-1:1000

Not tested in other applications.

Calculated MW 49 kDa. ([Note](#))

Properties

Form	Liquid
Buffer	PBS, 20% Glycerol
Preservative	0.025% ProClin 300
Storage	Store as concentrated solution. Centrifuge briefly prior to opening vial. For short-term storage (1-2 weeks), store at 4°C. For long-term storage, aliquot and store at -20°C or below. Avoid multiple freeze-thaw cycles.
Concentration	1.35 mg/ml (Please refer to the vial label for the specific concentration.)
Immunogen	Recombinant protein encompassing a sequence within the center region of human IL13 Receptor alpha 1. The exact sequence is proprietary.
Purification	Purified by antigen-affinity chromatography.
Conjugation	Unconjugated

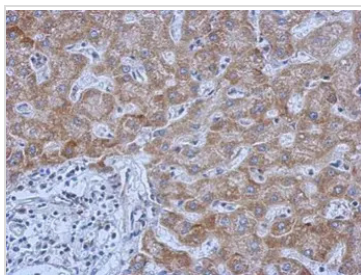
Note

For laboratory research use only. Not for any clinical, therapeutic, or diagnostic use in humans or animals. Not for animal or human consumption.

Purchasers shall not, and agree not to enable third parties to, analyze, copy, reverse engineer or otherwise attempt to determine the structure or sequence of the product.

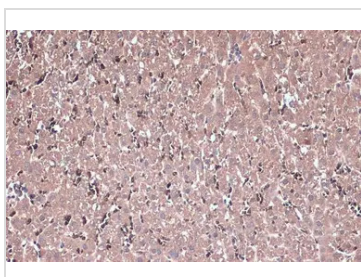


For full product information, images and publications, please visit our [website](#).

DATA IMAGES

GTX105788 IHC-P Image

Immunohistochemical analysis of paraffin-embedded human hepatoma, using IL13 Receptor alpha 1 (GTX105788) antibody at 1:500 dilution.

Antigen Retrieval: Trilogy™ (EDTA based, pH 8.0) buffer, 15min

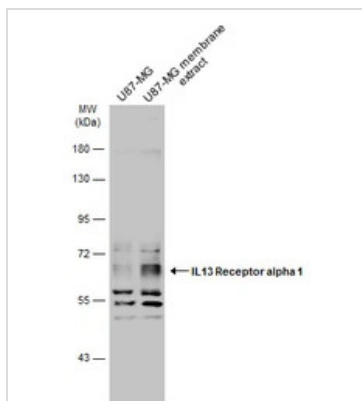

GTX105788 IHC-P Image

IL13 Receptor alpha 1 antibody detects IL13 Receptor alpha 1 protein at cytoplasm by immunohistochemical analysis.

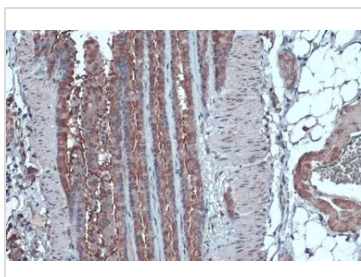
Sample: Paraffin-embedded rat liver.

IL13 Receptor alpha 1 stained by IL13 Receptor alpha 1 antibody (GTX105788) diluted at 1:500.

Antigen Retrieval: Citrate buffer, pH 6.0, 15 min


GTX105788 WB Image

U87-MG whole cell and membrane extracts (30 µg) were separated by 10% SDS-PAGE, and the membrane was blotted with IL13 Receptor alpha 1 antibody (GTX105788) diluted at 1:500. The HRP-conjugated anti-rabbit IgG antibody (GTX213110-01) was used to detect the primary antibody.


GTX105788 IHC-P Image

IL13 Receptor alpha 1 antibody detects IL13 Receptor alpha 1 protein at cell membrane and cytoplasm by immunohistochemical analysis.

Sample: Paraffin-embedded mouse lung.

IL13 Receptor alpha 1 stained by IL13 Receptor alpha 1 antibody (GTX105788) diluted at 1:500.

Antigen Retrieval: Citrate buffer, pH 6.0, 15 min



For full product information, images and publications, please visit our [website](https://www.genetex.com).