

## Folate Receptor beta antibody

Cat. No. GTX105822

Host	Rabbit
Clonality	Polyclonal
Isotype	IgG
Applications	WB, ICC/IF, IHC-P, IHC
Reactivity	Human, Mouse, Chinese Hamster

References ( 8 )

Package

100 µl, 25 µl

## Applications

## Application Note

\*Optimal dilutions/concentrations should be determined by the researcher.

Suggested dilution	Recommended dilution
WB	1:500-1:3000
ICC/IF	Assay dependent
IHC-P	1:100-1:1000
IHC	Assay dependent

Not tested in other applications.

Calculated MW 29 kDa. ( [Note](#) )

## Properties

Form	Liquid
Buffer	PBS, 20% Glycerol
Preservative	0.025% ProClin 300
Storage	Store as concentrated solution. Centrifuge briefly prior to opening vial. For short-term storage (1-2 weeks), store at 4°C. For long-term storage, aliquot and store at -20°C or below. Avoid multiple freeze-thaw cycles.
Concentration	1.34 mg/ml (Please refer to the vial label for the specific concentration.)
Immunogen	Recombinant protein encompassing a sequence within the center region of human Folate Receptor beta. The exact sequence is proprietary.
Purification	Purified by antigen-affinity chromatography.
Conjugation	Unconjugated

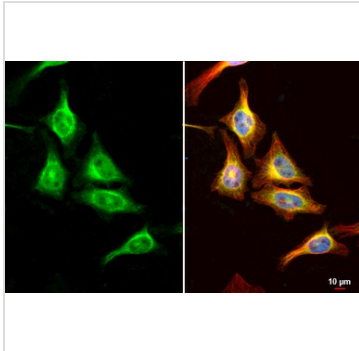
For full product information, images and publications, please visit our [website](#).

For laboratory research use only. Not for any clinical, therapeutic, or diagnostic use in humans or animals. Not for animal or human consumption.

## Note

Purchasers shall not, and agree not to enable third parties to, analyze, copy, reverse engineer or otherwise attempt to determine the structure or sequence of the product.

## DATA IMAGES



### GTXT105822 ICC/IF Image

Folate Receptor beta antibody detects Folate Receptor beta protein at endoplasmic reticulum by immunofluorescent analysis.

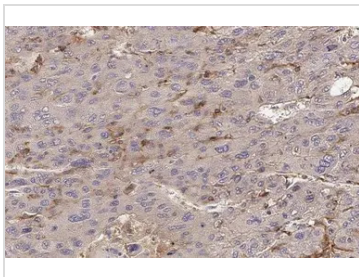
Sample: HeLa cells were fixed in 4% paraformaldehyde at RT for 15 min.

Green: Folate Receptor beta stained by Folate Receptor beta antibody (GTXT105822) diluted at 1:500.

Red: alpha Tubulin, a cytoskeleton marker, stained by alpha Tubulin antibody [GT114] (GTXT628802) diluted at 1:1000.

Blue: Fluoroshield with DAPI (GTXT30920).

Scale bar= 10μm.



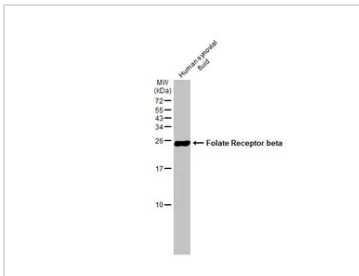
### GTXT105822 IHC-P Image

Folate Receptor beta antibody detects Folate Receptor beta protein at cell membrane and secreted by immunohistochemical analysis.

Sample: Paraffin-embedded human hepatocellular carcinoma.

Folate Receptor beta stained by Folate Receptor beta antibody (GTXT105822) diluted at 1:500.

Antigen Retrieval: Citrate buffer, pH 6.0, 15 min



### GTXT105822 WB Image

Human synovial fluid (30 μg) was separated by 15% SDS-PAGE, and the membrane was blotted with Folate Receptor beta antibody (GTXT105822) diluted at 1:1000. The HRP-conjugated anti-rabbit IgG antibody (GTXT213110-01) was used to detect the primary antibody.



For full product information, images and publications, please visit our [website](https://www.genetex.com).